



Q4 / 2019

Product Information and Technical Drawings

Product range expansion

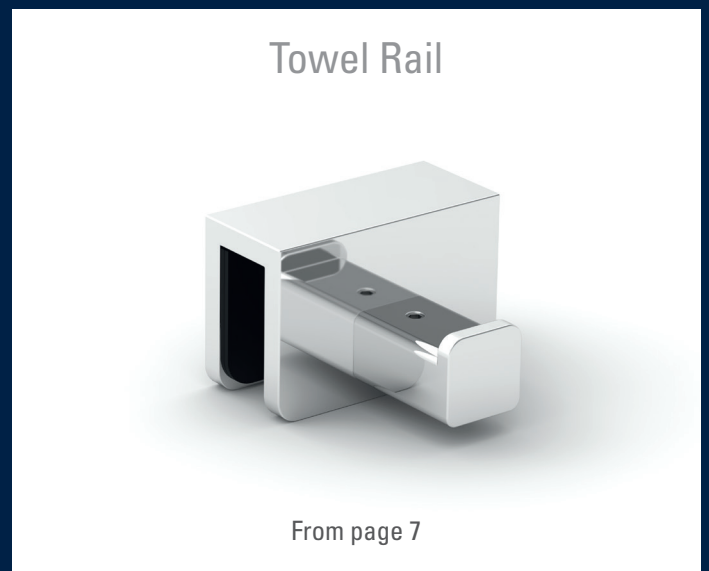


Reinforcement Bars



From page 6

Towel Rail



From page 7



Santos

The new Santos shower door hinge relies on proven quality in a new design. This new look, designed in-house at Bohle, excels thanks to its modern and elegant appearance. Due to the combination of round and square elements, the system optimally adapts itself to a wide array of fittings. Not only are the screws concealed behind cover caps, but also the zero position adjustment is completely invisible. Smallest gap dimensions with clear-cut lines reduce water leakage to a minimum. This all-round package turns Santos into a high-quality shower door hinge which should not be missing in any bathroom.



Shower Door Hinge Santos glass/wall 90° one side wall mounted



FINISH

ART. NO.

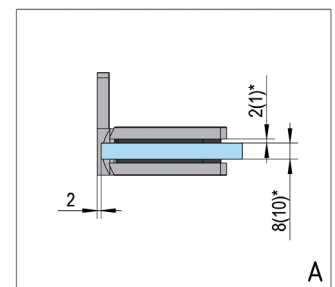
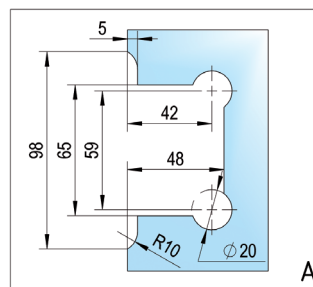
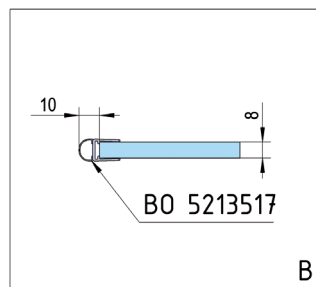
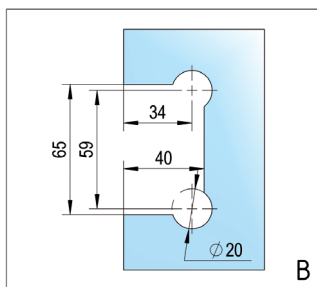
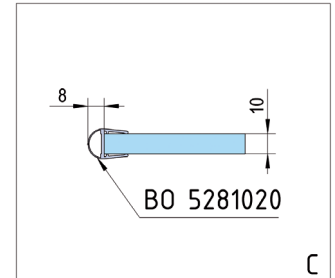
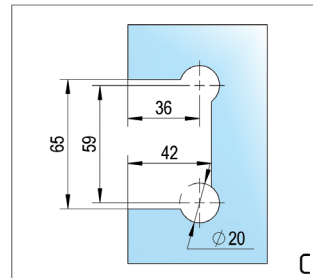
shiny chrome-plated

BO 5218434

black

BO 5218434B

❗ Mounting glass/wall 90° · Max. door weight per pair 40 kg · max. door height 2000 mm · Glass thickness 8, 10 mm · Self-closing from 15° · Continuously adjustable zero position · Supplied without mounting hardware



Shower Door Hinge Santos glass/glass 180° glass mounting



FINISH

ART. NO.

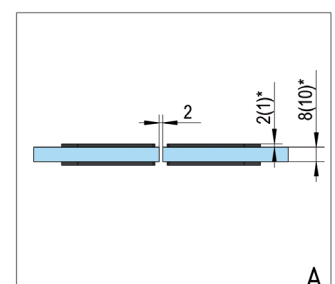
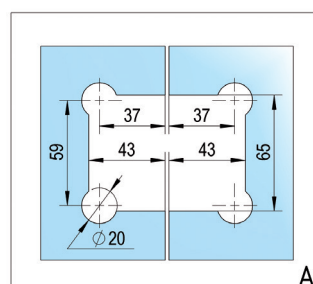
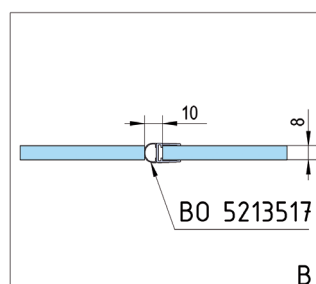
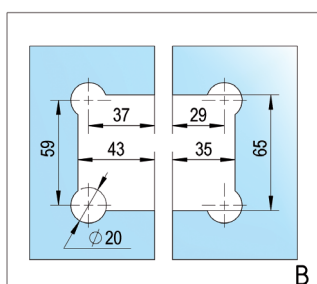
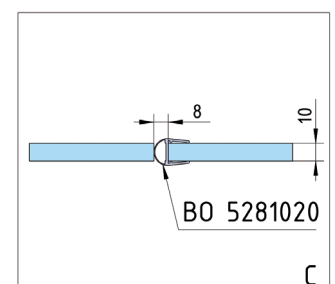
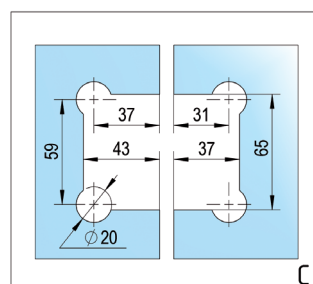
shiny chrome-plated

BO 5218433

black

BO 5218433B

❗ Mounting glass/glass 180° · Max. door weight per pair 40 kg · max. door height 2000 mm · Glass thickness 8, 10 mm · Self-closing from 15° · Continuously adjustable zero position · Supplied without mounting hardware



Shower Door Hinge Santos glass/glass 90° glass mounting



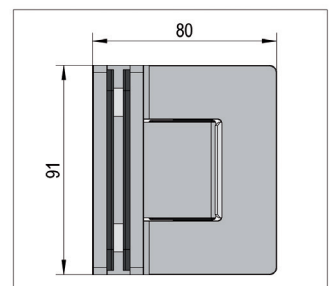
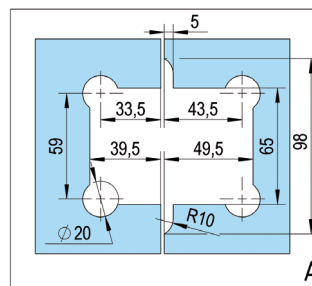
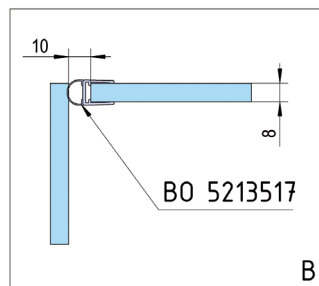
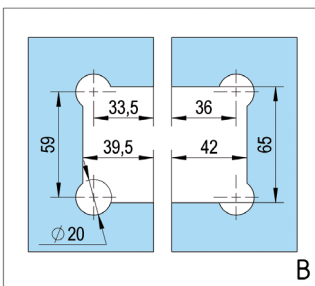
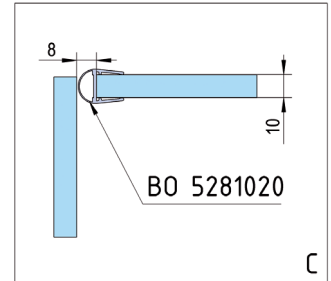
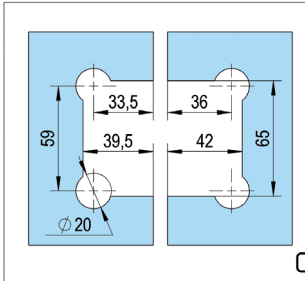
FINISH

ART. NO.

shiny chrome-plated

BO 5218442

❗ Mounting glass/glass 90° · Max. door weight per pair 40 kg · max. door height 2000 mm · Glass thickness 8, 10, 12 mm · Self-closing from 15° · Continuously adjustable zero position · Supplied without mounting hardware



Corner Clamp Santos glass/wall 90° one side wall mounted



FINISH

ART. NO.

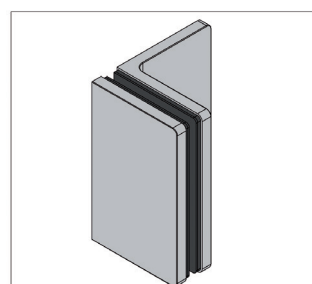
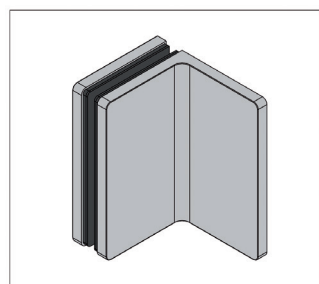
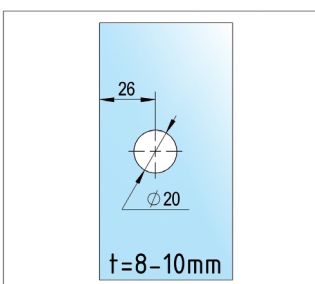
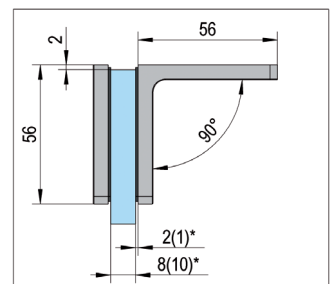
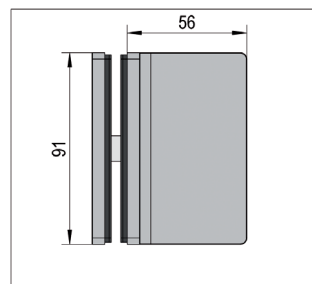
shiny chrome-plated

BO 5218435

black

BO 5218435B

❗ Mounting glass/wall 90° · Glass thickness 8, 10 mm · Supplied without mounting hardware



Corner Clamp Santos glass/glass 90°

FINISH

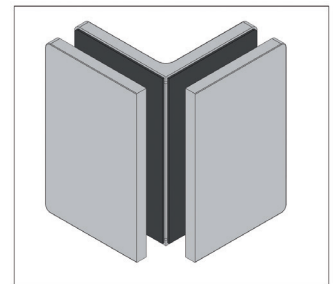
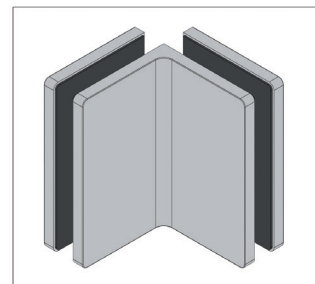
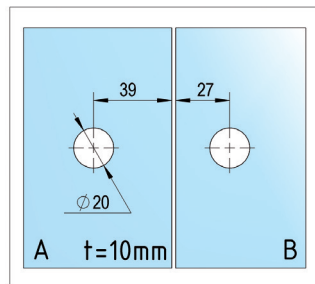
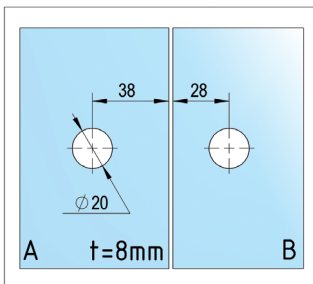
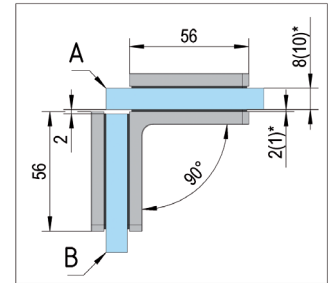
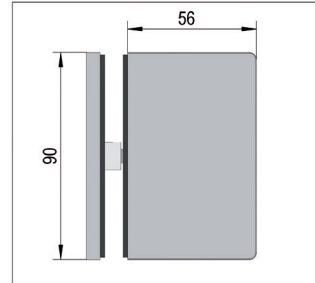
ART. NO.

shiny chrome-plated

BO 5218432



i Mounting glass/glass 90° · Glass thickness 8, 10 mm · Supplied without mounting hardware





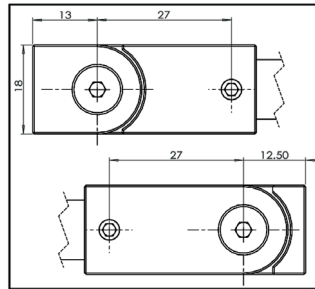
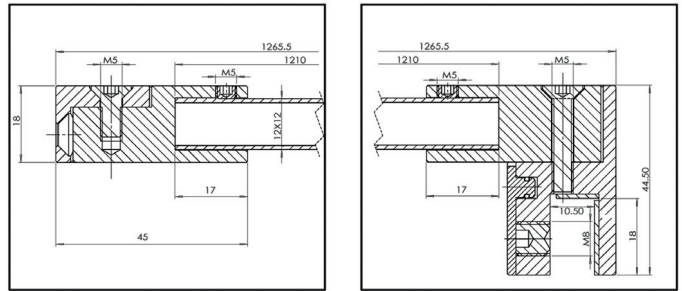
Reinforcement Bars

Reinforcement Bar Set Bohle square 12x12 glass/wall 90°



❶ Mounting glass/wall 90° · Size 12 x 12 mm · Bar can be trimmed to size
Wall and glass connector adjustable up to 45° · concealed screws · Glass
thickness 8, 10 mm

FINISH	ART. NO.
stainless steel look	BO 5420110
shiny chrome-plated	BO 5420262
black	BO 5420262B

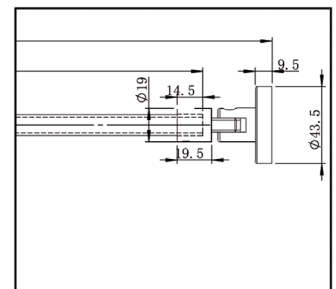
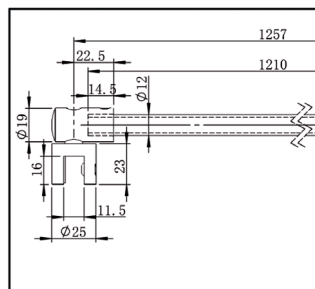


Reinforcement Bar Set Bohle round ø12 glass/wall 90°



FINISH	ART. NO.
stainless steel look	BO 5420109
shiny chrome-plated	BO 5420065
black	BO 5420065B

❶ Mounting glass/wall 90° · Size ø 12 mm · Bar can be trimmed to size ·
adjustable wall connector · Glass thickness 8, 10 mm





Towel Rail

Towel rail with one hook

FINISH

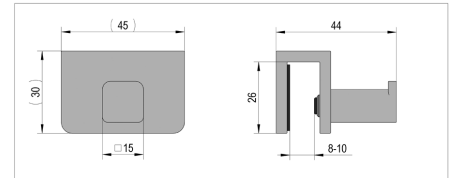
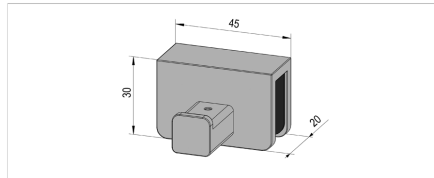
shiny chrome-plated

ART. NO.

BO 5420018



i Glass thickness 8 - 10 mm



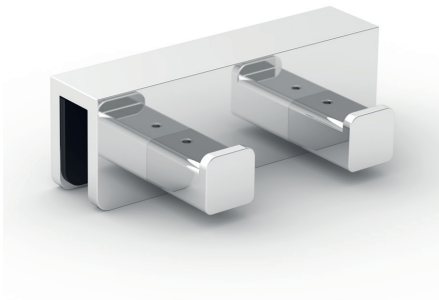
Towel rail with two hooks

FINISH

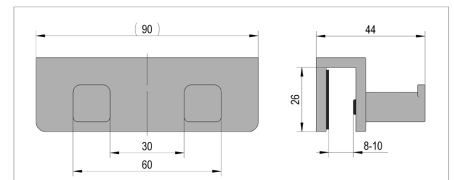
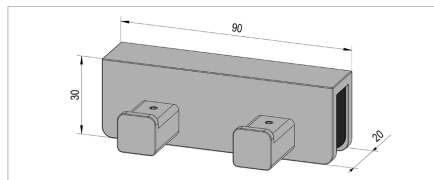
shiny chrome-plated

ART. NO.

BO 5420019



i Glass thickness 8 - 10 mm



Bohle AG
Dieselstr. 10
42781 Haan

T +49 2129 5568-249
F +49 2129 5568-241

export@bohle.de
www.bohle.com