



www.bohle-group.com

Series Plan Artist Shower door hinges and connectors

▶ Shower Door Hinge Plan Artist



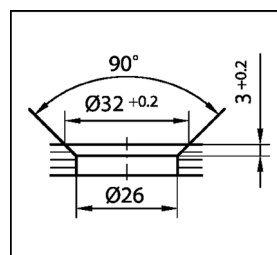
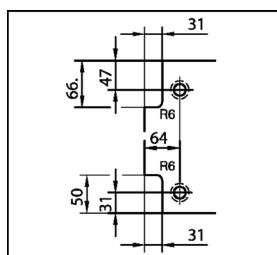
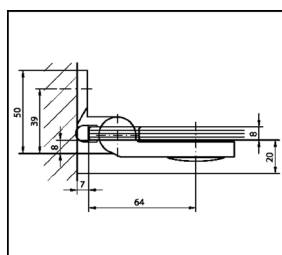
Even double doors can be opened inwards and outwards with Plan Artist. The perfect solution for barrier-free showers or sophisticated bathroom design in limited spaces. The shower door hinges Plan Artist are flush on the inside and equipped with the unique rise and fall mechanism. Max. door weight for 2 shower door hinges: 38 kg - max. projection: 800 mm

▶ Shower Door Hinge Plan Artist 90° left



i Mounting: one side wall mounted 90 ° glass to wall · Door opens both ways 90 ° · Stopper DIN left · Glass thickness 8 mm

Art. No.	Finish
BO 5215601	shiny chrome plated
BO 5215602	matt chrome plated
BO 5215603	satin nickel

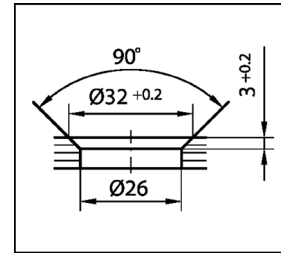
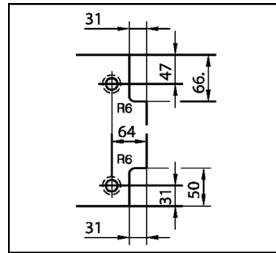
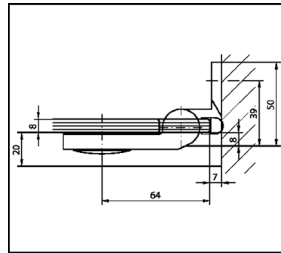


▶ Shower Door Hinge Plan Artist 90° right



i Mounting: one side wall mounted 90 ° glass to wall · Door opens both ways 90 ° · Stopper DIN right · Glass thickness 8 mm

Art. No.	Finish
BO 5215604	shiny chrome plated
BO 5215605	matt chrome plated
BO 5215606	satin nickel

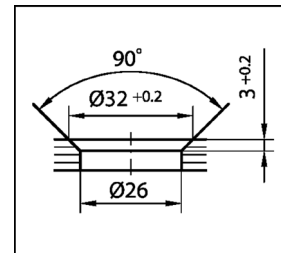
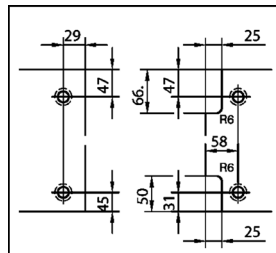
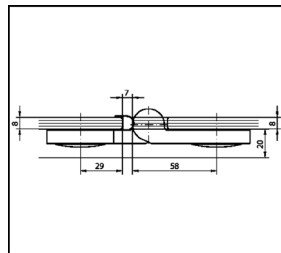


▶ Shower Door Hinge Plan Artist 180° left



i Mounting: glass-glass 180 ° · Door opens outwards 90 ° · Door opens inwards 135 ° · Stopper DIN left · Glass thickness 8 mm

Art. No.	Finish
BO 5215607	shiny chrome plated
BO 5215608	matt chrome plated
BO 5215609	satin nickel

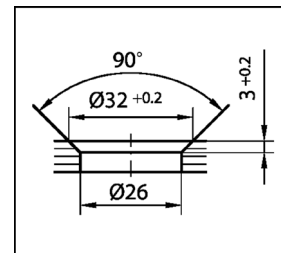
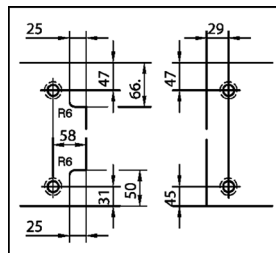
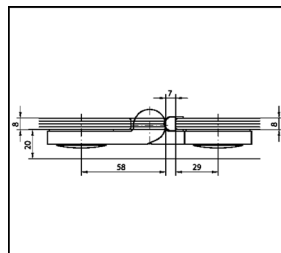


▶ Shower Door Hinge Plan Artist 180° right



i Mounting: glass-glass 180 ° · Door opens outwards 90 ° · Door opens inwards 135 ° · Stopper DIN right · Glass thickness 8 mm

Art. No.	Finish
BO 5215611	shiny chrome plated
BO 5215612	matt chrome plated
BO 5215613	satin nickel

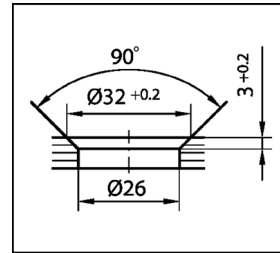
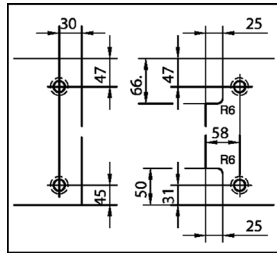
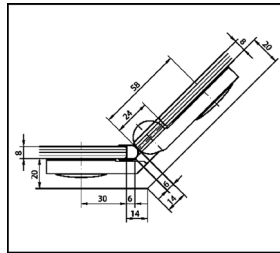


▶ Shower Door Hinge Plan Artist 135° left



i Mounting: glass-glass 135° · Door opens both ways 90° · Stopper DIN left · Glass thickness 8 mm

Art. No.	Finish
BO 5215614	shiny chrome plated
BO 5215615	matt chrome plated
BO 5215616	satin nickel

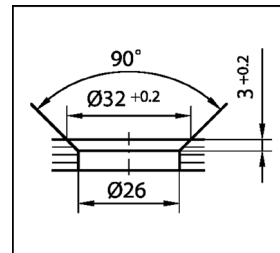
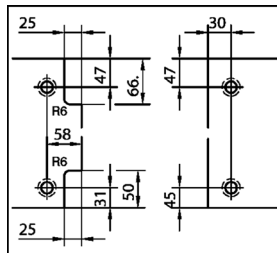
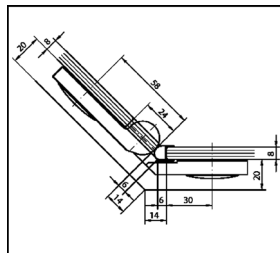


▶ Shower Door Hinge Plan Artist 135° right



i Mounting: glass-glass 135° · Door opens both ways 135° · Stopper DIN right · Glass thickness 8 mm

Art. No.	Finish
BO 5215617	shiny chrome plated
BO 5215618	matt chrome plated
BO 5215619	satin nickel

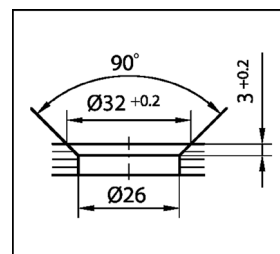
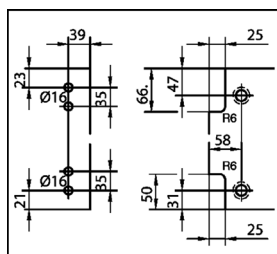
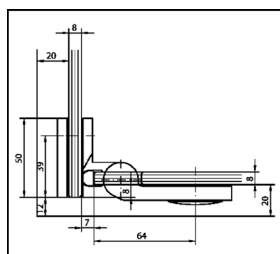


▶ Shower Door Hinge Plan Artist 90° left



i Mounting: glass-glass 90° · Door opens both ways 90° · Glass thickness 8 mm

Art. No.	Finish
BO 5215621	shiny chrome plated
BO 5215622	matt chrome plated
BO 5215623	satin nickel

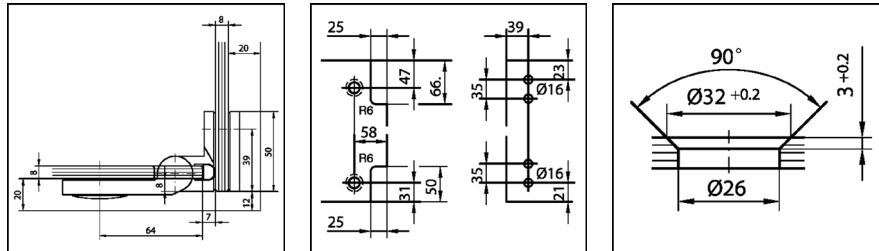


▶ Shower Door Hinge Plan Artist 90° right

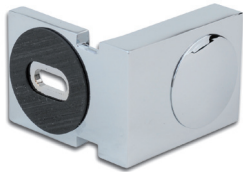


i Mounting: glass-glass 90° · Door opens both ways 90° · Glass thickness 8 mm

Art. No.	Finish
BO 5215624	shiny chrome plated
BO 5215625	matt chrome plated
BO 5215626	satın nickel

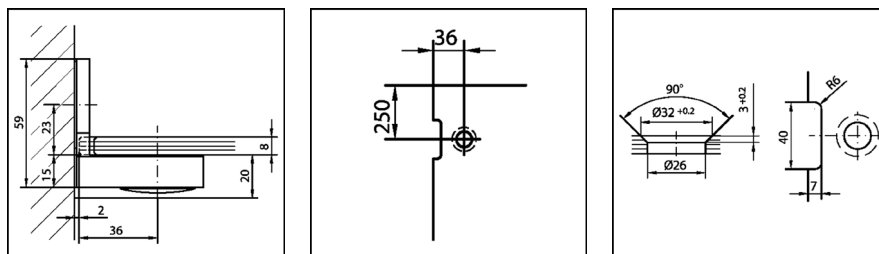


▶ Corner Clamp Plan Artist 90° glass to wall

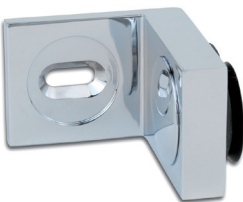


i Mounting: glass to wall 90° · Glass thickness 8 mm · Mounting plate inwards

Art. No.	Finish
BO 5215631	shiny chrome plated
BO 5215632	matt chrome plated
BO 5215633	satın nickel

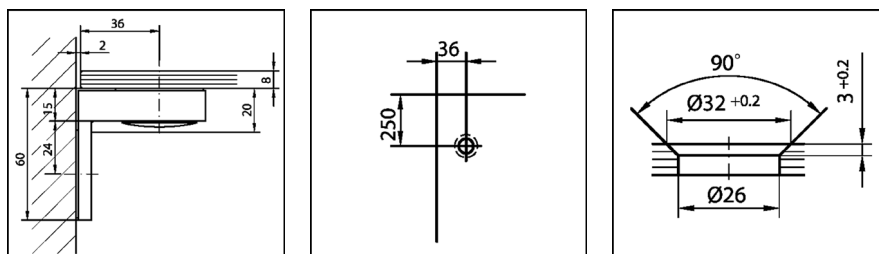


▶ Corner Clamp Plan Artist 90° glass to wall



i Mounting: glass to wall 90° · Glass thickness 8 mm · Mounting plate outwards

Art. No.	Finish
BO 5215634	shiny chrome plated
BO 5215635	matt chrome plated
BO 5215636	satın nickel

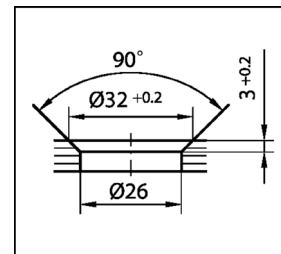
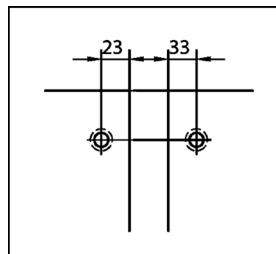
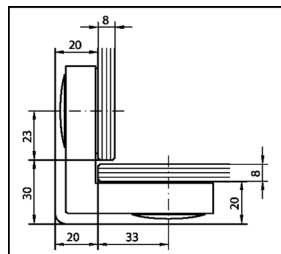


▶ Corner Clamp Plan Artist 90° glass-glass



i Mounting: glass-glass 90° · Glass thickness 8 mm

Art. No.	Finish
BO 5215637	shiny chrome plated
BO 5215638	matt chrome plated
BO 5215639	satin nickel

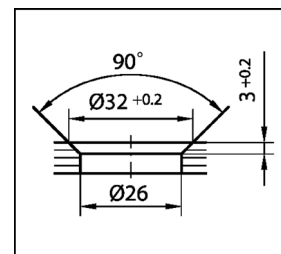
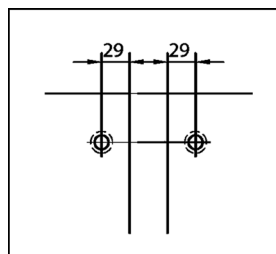
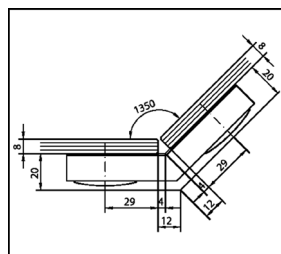


▶ Corner Clamp Plan Artist 135° glass-glass



i Mounting: glass-glass 135° · Glass thickness 8 mm

Art. No.	Finish
BO 5215641	shiny chrome plated
BO 5215642	matt chrome plated
BO 5215643	satin nickel



Deutschland

Bohle AG
Dieselstraße 10
D - 42781 Haan

T +49 2129 5568-0
F +49 2129 5568-281

info@bohle.de

United Kingdom and Ireland

Bohle Ltd.
Fifth Avenue
Tameside Park · Dukinfield
Cheshire · SK16 4PP

T+44 161 3421100
F +44 161 3440111

info@bohle.ltd.uk

South Africa

Bohle Glass Equipment (Pty) Ltd.
Unit 3, Graphite Industrial Park
Fabriek Street,
Strijdom Park 2125, Gauteng

T +27 11 792-6430
F +27 11 793-5634

info@bohle.co.za