



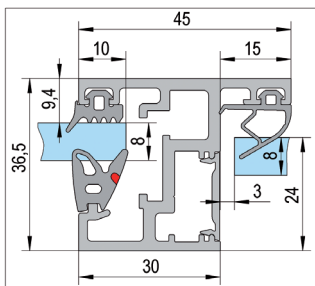
Q3 / 2019

Product Information and Technical Drawings

Product range
enlargement

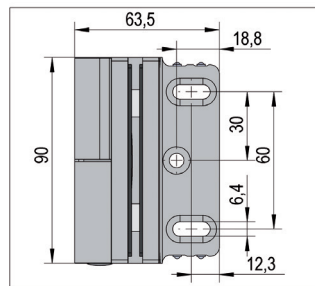


FrameTec Select 2.0



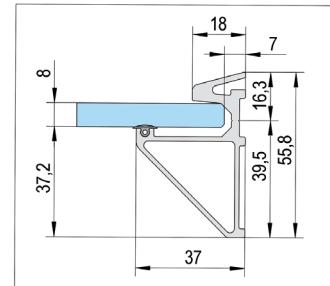
From page 4

Madrid
with rise and fall mechanism



From page 12

Glass Shelf Support profile



From page 15



Lyon

Floor-to-ceiling windows in houses and residential buildings are a guarantor for plenty of light and generous spaciousness. Maximum transparency and highest safety merge in the Lyon French balcony system from Bohle. Even maximum glass widths of 4000 mm do not pose any problems. Thanks to its patented 1-2-3 click system, installation is as easy as can be and does not require any specific tools.



Lyon French Balcony from Bohle



Installation on the façade can be carried out either from the front or inside the soffit, and both of these two installation options can also be combined. In addition, Lyon can be fixed directly onto the window frame and is suitable for installation onto concrete/stone, plastic, wood or aluminium. With only 4 fixing points on each side, the French balcony guarantees tested safety as per the General Building Inspection Test Certificate (AbP), and saves time during mounting. The type-tested statics ensures highest planning certainty. Lyon is available with the following finishes: Aluminium colours, white and anthracite. Further finishes are available on request. Lyon is available in the heights 900, 1000 and 1100 mm. Self-adhesive corner protectors can be added as an option.

Included in delivery

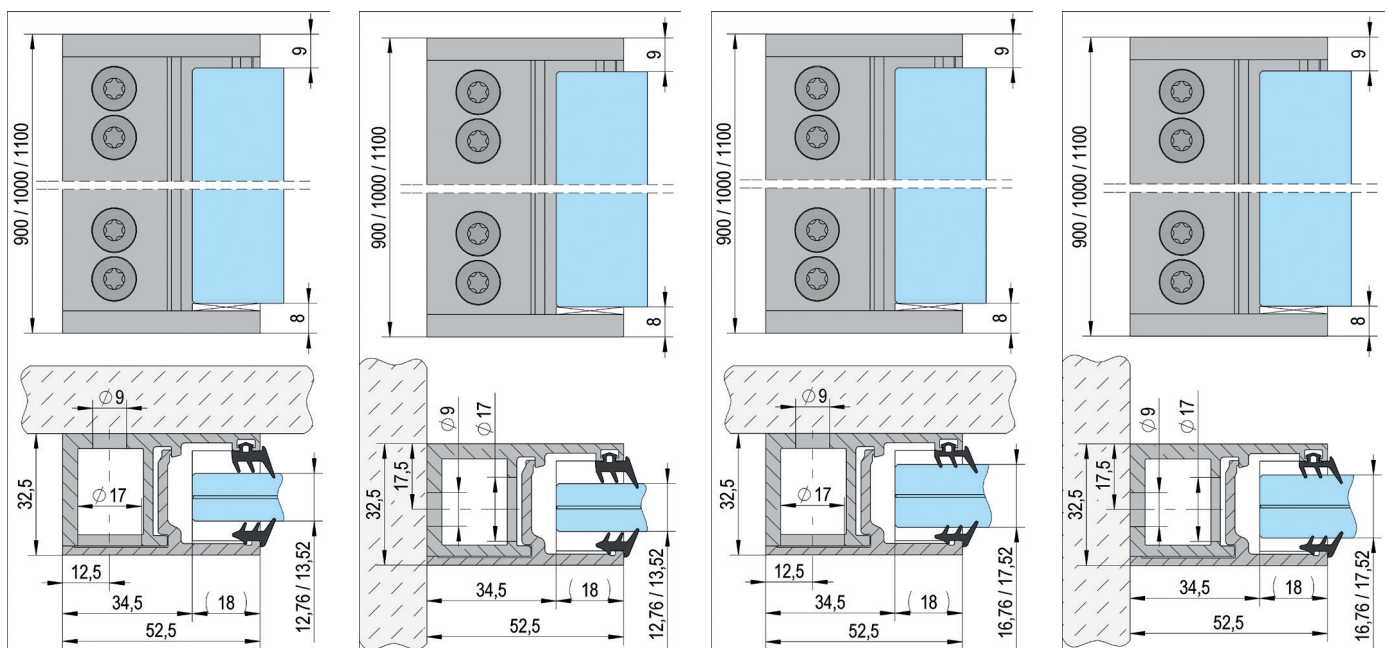
2x Basic profile, 2x clip-on profile, rubber seal set, end caps

HEIGHT · FINISH · MOUNTING	ART. NO.
900 mm · RAL 9016 (white) · from the front	BO 5404000
900 mm · RAL 9016 (white) · lateral	BO 5404001
1000 mm · RAL 9016 (white) · from the front	BO 5404002
1000 mm · RAL 9016 (white) · lateral	BO 5404003
1100 mm · RAL 9016 (white) · from the front	BO 5404004
1100 mm · RAL 9016 (white) · lateral	BO 5404005
900 mm · RAL 7016 (anthracite grey) · from the front	BO 5404006
900 mm · RAL 7016 (anthracite grey) · lateral	BO 5404007
1000 mm · RAL 7016 (anthracite grey) · from the front	BO 5404008
1000 mm · RAL 7016 (anthracite grey) · lateral	BO 5404009
1100 mm · RAL 7016 (anthracite grey) · from the front	BO 5404010
1100 mm · RAL 7016 (anthracite grey) · lateral	BO 5404011
900 mm · aluminium-coloured anodised · from the front	BO 5404012
900 mm · aluminium-coloured anodised · lateral	BO 5404013
1000 mm · aluminium-coloured anodised · from the front	BO 5404014
1000 mm · aluminium-coloured anodised · lateral	BO 5404015
1100 mm · aluminium-coloured anodised · from the front	BO 5404016
1100 mm · aluminium-coloured anodised · lateral	BO 5404017

HEIGHT · FINISH · MOUNTING	ART. NO.
900 mm · RAL 9016 (white) · from the front	BO 5404020
900 mm · RAL 9016 (white) · lateral	BO 5404021
1000 mm · RAL 9016 (white) · from the front	BO 5404022
1000 mm · RAL 9016 (white) · lateral	BO 5404023
1100 mm · RAL 9016 (white) · from the front	BO 5404024
1100 mm · RAL 9016 (white) · lateral	BO 5404025
900 mm · RAL 7016 (anthracite grey) · from the front	BO 5404026
900 mm · RAL 7016 (anthracite grey) · lateral	BO 5404027
1000 mm · RAL 7016 (anthracite grey) · from the front	BO 5404028
1000 mm · RAL 7016 (anthracite grey) · lateral	BO 5404029
1100 mm · RAL 7016 (anthracite grey) · from the front	BO 5404030
1100 mm · RAL 7016 (anthracite grey) · lateral	BO 5404031
900 mm · aluminium-coloured anodised · from the front	BO 5404032
900 mm · aluminium-coloured anodised · lateral	BO 5404033
1000 mm · aluminium-coloured anodised · from the front	BO 5404034
1000 mm · aluminium-coloured anodised · lateral	BO 5404035
1100 mm · aluminium-coloured anodised · from the front	BO 5404036
1100 mm · aluminium-coloured anodised · lateral	BO 5404037

📌 Set for 12,76 - 13,52 mm glass

📌 Set for 16,76 - 17,52 mm glass





FrameTec Select 2.0

Glass partition walls flood rooms with light and provide unequalled transparency. They create a classy atmosphere and save the installer a lot of effort and additional costs, which also makes this system attractive from an economic point of view. This is especially true if these partitions, like FrameTec Select 2.0, stand out thanks to their numerous and flexible installation options, for example, with a single door, with overpanel or sidelight.



FrameTec Select 2.0 Aluminium frame complete sets

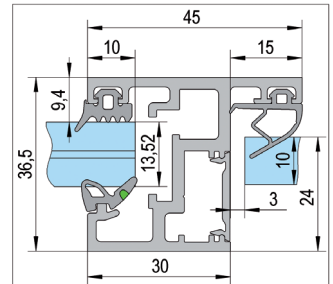
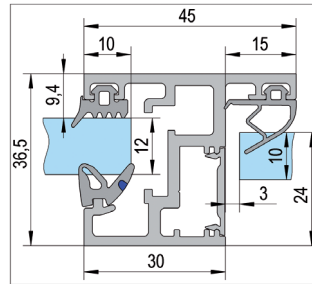
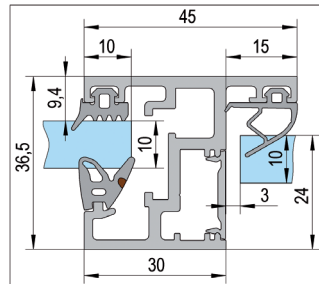
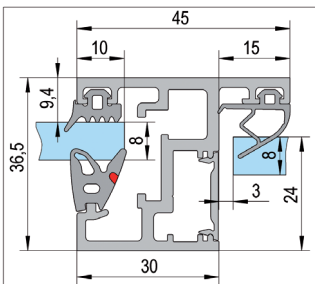
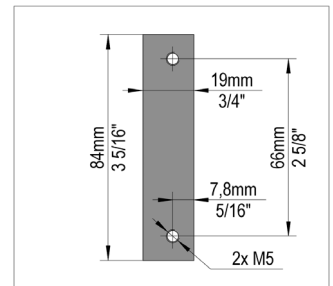
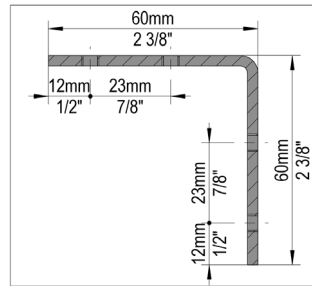


i Glass thickness: Door: 8 - 10 mm tempered glass; fixed sidelight/overpanel: 8 - 12 mm tempered glass; 8.76 - 13.52 mm laminated safety glass. Sealing strip colour: grey. Profiles are mitred and can be trimmed individually. Please order sealing strips for fixed sidelights and overpanel glazings separately, depending on glass thickness. Please order the strike plate separately. Starting from a door height >2200 mm, we recommend using 3 hinges. Note: The glass processing required for the door hinges deviates from the standard. Note: The cover profile must be trimmed on site. Material aluminium

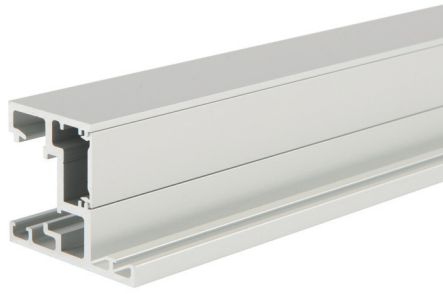
FRAME DIMENSION · DOOR DIMENSION · FINISH	ART. NO.
901 x 2138 mm · 834 x 2097 mm · aluminium-coloured anodised E6/EV1	BO 5220801
1026 x 2138 mm · 959 x 2097 mm · aluminium-coloured anodised E6/EV1	BO 5220802
1067 x 2750 mm · 1000 x 2709 mm · aluminium-coloured anodised E6/EV1	BO 5220803
901 x 2138 mm · 834 x 2097 mm · stainless steel look anodised E1/C31	BO 5220804
1026 x 2138 mm · 959 x 2097 mm · stainless steel look anodised E1/C31	BO 5220805
1067 x 2750 mm · 1000 x 2709 mm · stainless steel look anodised E1/C31	BO 5220806

Included in delivery

- 3x Frame profile
- 3x Cover profile
- 2x Corner Connector
- Rebate gasket grey
- 2 or 3 retainer plates for aluminium frame hinges

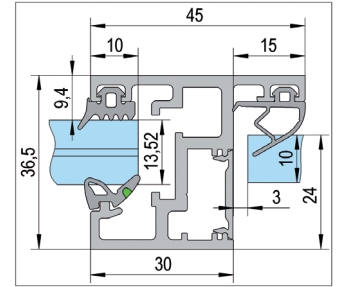
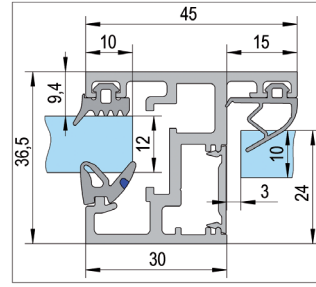
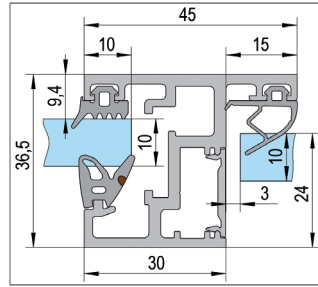
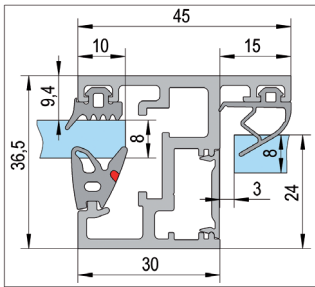


FrameTec Select 2.0 Frame profile incl. Cover Profile



FINISH	ART. NO.
aluminium-coloured anodised E6/EV1	BO 5220811
stainless steel look anodised E1/C31	BO 5220812

i Glass thickness: Door: 8 - 10 mm tempered glass; fixed sidelight/overpanel: 8 - 12 mm tempered glass; 8.76 - 13.52 mm laminated safety glass · Starting from a door height >2200 mm, we recommend using 3 hinges. · Note: The glass processing required for the door hinges deviates from the standard. · Note: The cover profile must be trimmed on site. · Please order single components, such as sealing strips, retainer plates, strike plates, and corner connectors separately. · Material aluminium · Length 5600 mm



FrameTec Select 2.0 Retainer plate for aluminium frame hinge

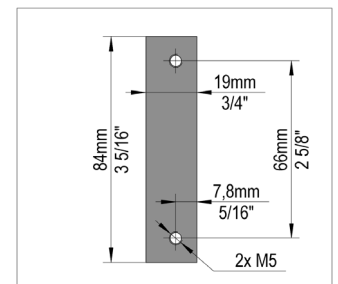


ART. NO.
BO 5220813

Included in delivery

- 1x Retainer plate
- 2x Screw M4

i Starting from a door height >2200 mm, we recommend using 3 hinges. · Material aluminium



FrameTec Select 2.0 Retainer plate for stainless steel frame hinge

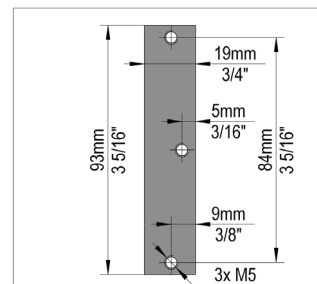


ART. NO.
BO 5220814

Included in delivery

1x Retainer plate
3x Screw M4

i Starting from a door height >2200 mm, we recommend using 3 hinges. · Material aluminium



FrameTec Select 2.0 Corner Connector

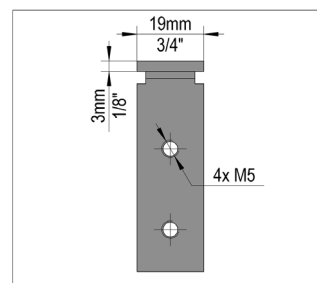
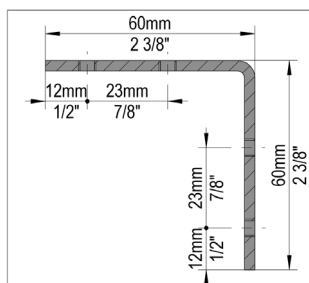


ART. NO.
BO 5220815

Included in delivery

1x Corner Connector

i Stable corner connectors ensure that the frame and the two-part FrameTec Select 2.0 glazing profiles are safety held in place. · Material aluminium



FrameTec Select 2.0 Glazing profile two-piece



FINISH

ART. NO.

aluminium-coloured anodised E6/EV1

BO 5220816

stainless steel look anodised E1/C31

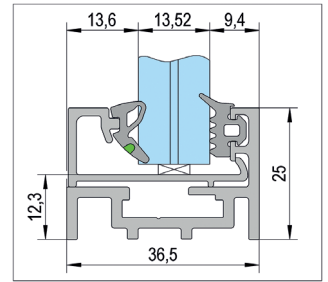
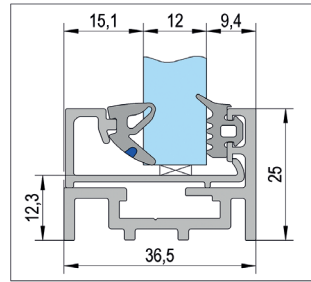
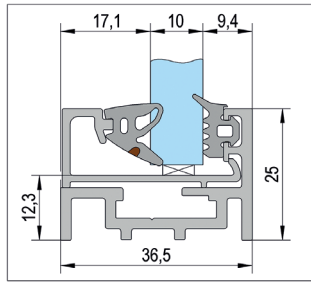
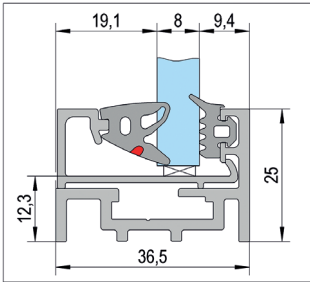
BO 5220817

Included in delivery

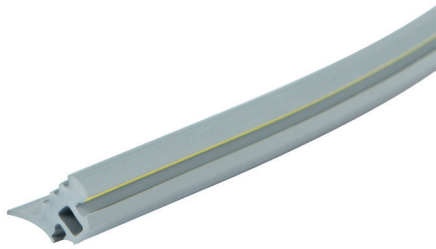
1x Base profile

1x Glass profile

i Glass thickness tempered glass 8 - 12 mm, laminated glass 8.76 - 13.52 mm · Please order corner connectors and sealing strips separately, depending on the glass thickness. · The sealing strips are available in black or grey. · Material aluminium · Length 5600 mm



FrameTec Select 2.0 Base gasket for fixed and overpanel glazings



FINISH

ART. NO.

grey

BO 5220821

black

BO 5220822

i Glass thickness tempered glass 8 - 12 mm, laminated glass 8.76 - 13.52 mm · Please order the suitable sealing strip separately, depending on the selected glass thickness. · Length 7000 mm

BO 5220831	BO 5220832
BO 5220821	BO 5220822

FrameTec Select 2.0 Glazing gasket for fixed and overpanel glazings



FINISH · GLASS THICKNESS	ART. NO.
grey · tempered glass 8 mm, laminated glass 8.76 mm	BO 5220823
black · tempered glass 8 mm, laminated glass 8.76 mm	BO 5220824
grey · tempered glass 10 mm, laminated glass 10.76 mm	BO 5220825
black · tempered glass 10 mm, laminated glass 10.76 mm	BO 5220826
grey · tempered glass 12 mm, laminated glass 12.76 mm	BO 5220827
black · tempered glass 12 mm, laminated glass 12.76 mm	BO 5220828
grey · laminated safety glass 13,52 mm	BO 5220829
black · laminated safety glass 13,52 mm	BO 5220830

BO 5220823	BO 5220825	BO 5220824	BO 5220826
BO 5220827	BO 5220829	BO 5220828	BO 5220830

i Please order the suitable basic sealing strips separately. · Length 7000 m

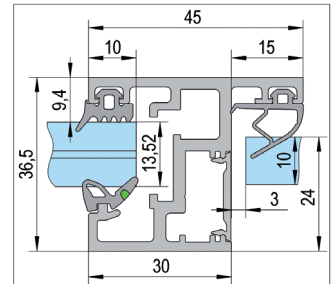
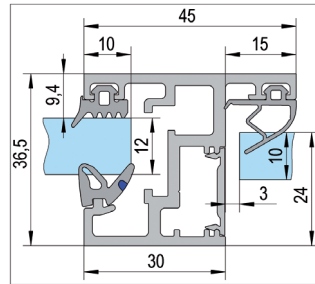
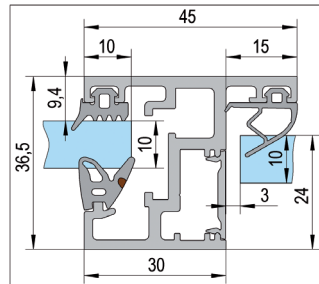
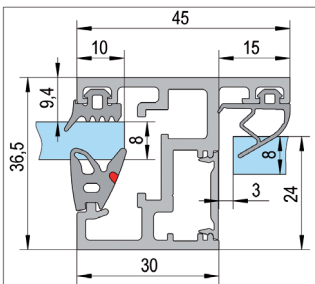
FrameTec Select 2.0 Rebate gasket



FINISH	ART. NO.
grey	BO 5220831
black	BO 5220832

i Glass thickness tempered glass 8 - 10 mm, laminated glass 8.76 - 10.76 mm · Length 7000 mm

BO 5220831	BO 5220832
BO 5220821	BO 5220822



FrameTec Premium / Select 2.0 Strike Plate Latch and Bolt



ART. NO.

BO 5220743

📌 Sturdy stainless steel strike plate with milled edge · Material stainless steel · Finish brushed

FrameTec Premium / Select 2.0 Strike Plate Latch



ART. NO.

BO 5220744

📌 Sturdy stainless steel strike plate with milled edge · Material stainless steel · Finish brushed

Drop Down Seals Bohle GS-A



LENGTH · CAN BE TRIMMED TO · FINISH

ART. NO.

708 mm · 583 mm · aluminium-coloured E6/EV1

BO 5220750

833 mm · 708 mm · aluminium-coloured E6/EV1

BO 5220751

958 mm · 833 mm · aluminium-coloured E6/EV1

BO 5220752

1083 mm · 958 mm · aluminium-coloured E6/EV1

BO 5220753

708 mm · 583 mm · stainless steel look anodised E1/C31

BO 5220754

833 mm · 708 mm · stainless steel look anodised E1/C31

BO 5220755

958 mm · 833 mm · stainless steel look anodised E1/C31

BO 5220756

1083 mm · 958 mm · stainless steel look anodised E1/C31

BO 5220757

📌 Ideal for sealing already installed smooth glass, metal, aluminium, wooden and plastic doors · Sealing strips can be trimmed, please consider the minimum length · Incl. cover strip silver-coloured · Sound insulation 41 dB · Material aluminium



Madrid with rise and fall mechanism

The Madrid shower door hinge is now also available with rise and fall mechanism and adjustable zero position. The wall mounting hinge combines all new functions together with the proven chamfer. A screw located underneath the hinge enables adjusting the zero position. It is loosened after installing the glass. The entire mechanism can then be rotated by moving the pane aided by the glass weight.



Shower Door Hinge Madrid with Rise and fall mechanism glass/wall 90° left opens outwards

FINISH

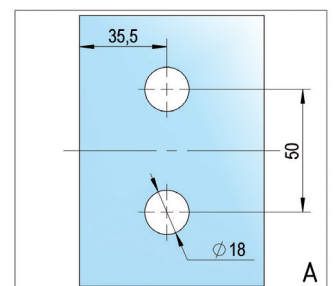
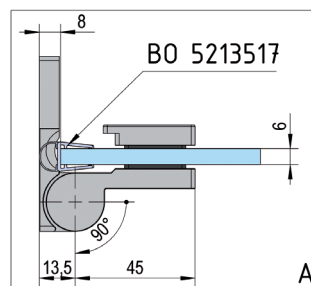
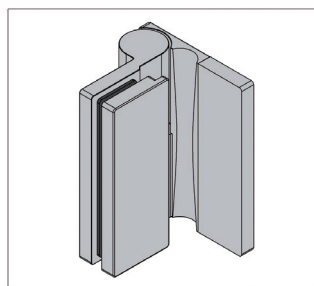
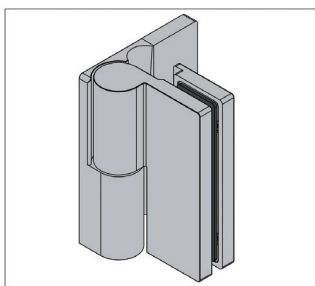
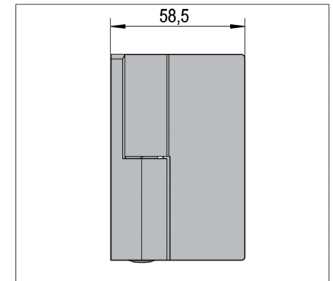
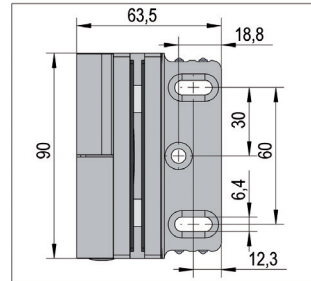
ART. NO.

shiny chrome-plated

BO 5215530L



ⓘ Mounting glass/wall 90° · Max. door weight per pair 40 kg · Glass thickness 6, 8, 10 mm · zero position adjustable from below · return motion thanks to rise and fall mechanism · Concealed screws · with chamfer · continuous sealing strip · lifting height 5 mm



Shower Door Hinge Madrid with Rise and fall mechanism glass/wall 90° right opens outwards

FINISH

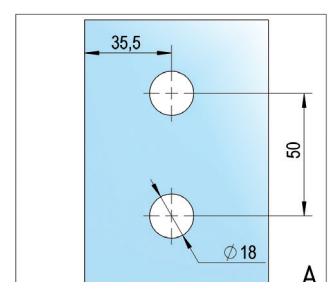
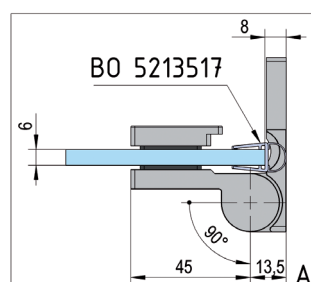
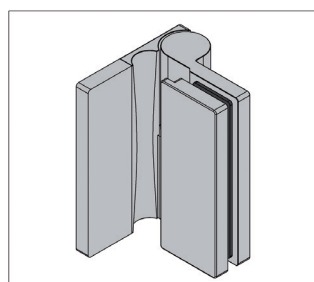
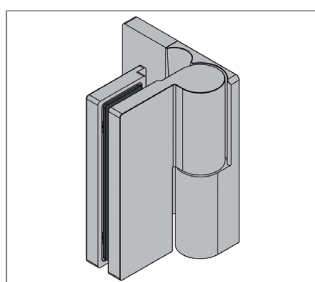
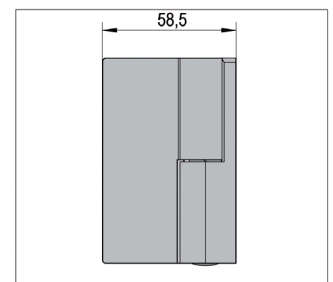
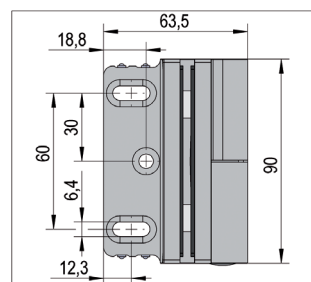
ART. NO.

shiny chrome-plated

BO 5215530R



ⓘ Mounting glass/wall 90° · Max. door weight per pair 40 kg · Glass thickness 6, 8, 10 mm · zero position adjustable from below · return motion thanks to rise and fall mechanism · Concealed screws · with chamfer · continuous sealing strip · lifting height 5 mm



Shower Door Hinge Madrid with Rise and fall mechanism glass/glass 180° left opens outwards

FINISH

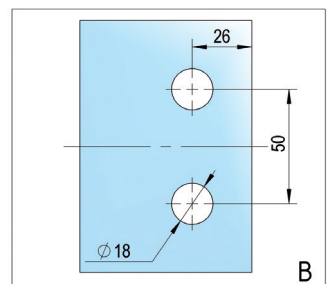
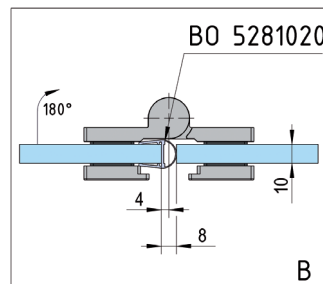
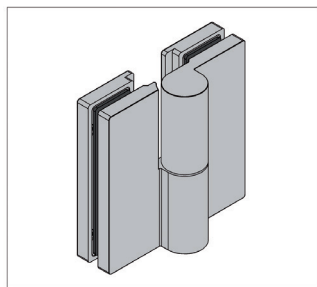
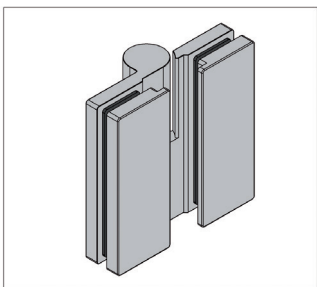
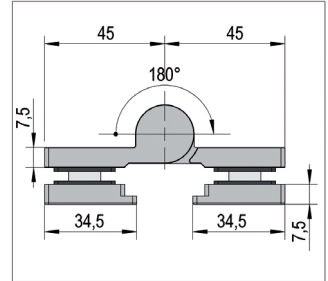
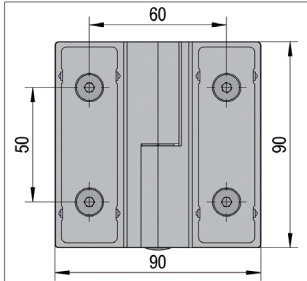
ART. NO.

shiny chrome-plated

BO 5215532L



❶ Mounting glass/glass 180° · Max. door weight per pair 40 kg · Glass thickness 6, 8, 10 mm · zero position adjustable from below · return motion thanks to rise and fall mechanism · continuous sealing strip · lifting height 5 mm



Shower Door Hinge Madrid with Rise and fall mechanism glass/glass 180° right opens outwards

FINISH

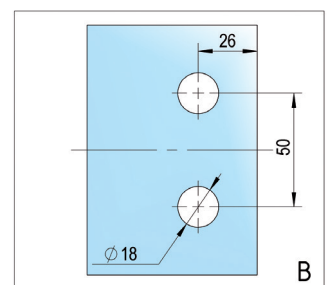
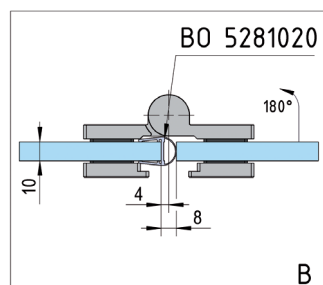
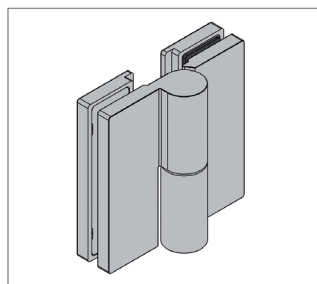
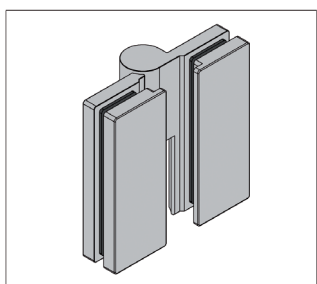
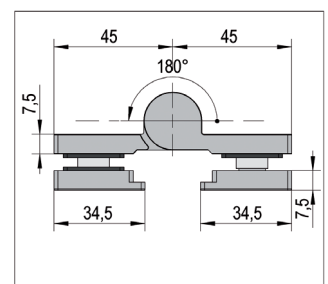
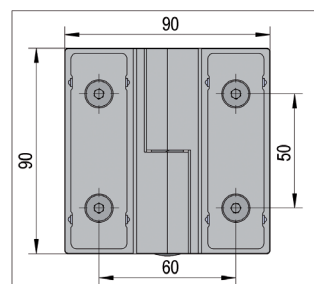
ART. NO.

shiny chrome-plated

BO 5215532R



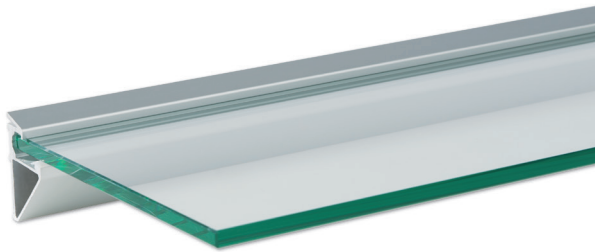
❶ Mounting glass/glass 180° · Max. door weight per pair 40 kg · Glass thickness 6, 8, 10 mm · zero position adjustable from below · return motion thanks to rise and fall mechanism · continuous sealing strip · lifting height 5 mm





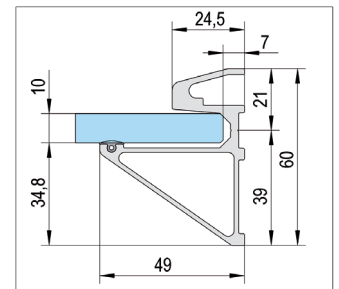
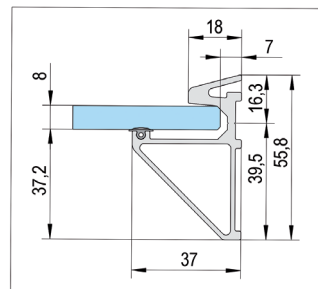
Glass Shelf Support profile

Glass Shelf Support profile



GLASS THICKNESS · FINISH · LENGTH	ART. NO.
8 mm · aluminium-coloured anodised E6/EV1 · 1200 mm	BO 5201850
8 mm · stainless steel look E4/C31 · 1200 mm	BO 5201851
8 mm · aluminium-coloured anodised E6/EV1 · 2400 mm	BO 5201852
8 mm · stainless steel look E4/C31 · 2400 mm	BO 5201853
8 mm · aluminium-coloured anodised E6/EV1 · 5000 mm	BO 5201854
8 mm · stainless steel look E4/C31 · 5000 mm	BO 5201855
10 mm · aluminium-coloured anodised E6/EV1 · 1200 mm	BO 5201856
10 mm · stainless steel look E4/C31 · 1200 mm	BO 5201857
10 mm · aluminium-coloured anodised E6/EV1 · 2400 mm	BO 5201858
10 mm · stainless steel look E4/C31 · 2400 mm	BO 5201859
10 mm · aluminium-coloured anodised E6/EV1 · 5000 mm	BO 5201860
10 mm · stainless steel look E4/C31 · 5000 mm	BO 5201861

Information on load bearing capacity: shelf depth 30 cm = 50 kg/m, shelf depth 40 cm = 32 kg/m · Distance between fixing points approx. 55 cm · incl. rubber support · Please order cover caps separately. · Material aluminium · Mounting glass/wall



Cover cap set for Glass Shelf Support profile



GLASS THICKNESS · FINISH	ART. NO.
8 mm · silver colour	BO 5201846
8 mm · stainless steel colour	BO 5201847
10 mm · silver colour	BO 5201821
10 mm · stainless steel colour	BO 5201822

Material plastic · Packaging unit 1 pair

Bohle AG
Dieselstr. 10
42781 Haan

T +49 2129 5568-249
F +49 2129 5568-241

export@bohle.de
www.bohle.com