

Silberschnitt

If you work with glass:
Bohle has the products you need.

Diamantor

If you want perfect results:
Bohle products are of top quality.



www.bohle.de

Tools for Glass Finishing
Made in Germany

Glass Cutters

Silberschnitt

2000 Oil Glass Cutter



Perfect cutting of glass · optimal application of cutting fluid · 2-valve technology · round cutting head · trailing, exchangeable Toplife cutting wheels · sturdy brass handle · Straight edge stand-off distance 6 mm
Ideal especially in combination with the ergonomically shaped T-handle.

| Art. No. | Description |
|-----------|---|
| BO 2000.M | MASTER: 155° cutting angle, for cutting shapes and glass that is 6 to 12 mm thick |

Silberschnitt

Oil Glass Cutter



With replaceable cutting head · carbide cutting wheel · solid brass model with rubber collar · Cutting angle 138° · Straight edge stand-off distance 2.5 mm · Cutting head turns 30°
(Optional accessory: BO 2045.0 Transverse handle)

| Art. No. | Description |
|----------|---------------------|
| BO 447.8 | Narrow cutting head |
| BO 448.8 | Wide cutting head |

Silberschnitt

4000 Oil Glass Cutter



Brass handle with finger grips
Cutting angle 138° · Straight edge stand-off distance 2.5 mm · Cutting head turns 30° · Narrow cutting head

| Art. No. | Description |
|-----------|-------------|
| BO 4000.1 | |

Silberschnitt

4000 Oil Glass Cutter



Transparent blue plastic handle · Cutting angle 138° · Straight edge stand-off distance 2.5 mm · Narrow cutting head

| Art. No. | Description |
|-----------|-------------|
| BO 4001.1 | |

Silberschnitt

Oil Glass Cutter



With replaceable, wide cutting head · high-quality carbide cutting wheel · plastic handle with transparent oil reservoir · solid brass finger grip · traditional shape · Cutting angle 138° · Straight edge stand-off distance 2.5 mm

| Art. No. | Description |
|----------|------------------------|
| BO 441.0 | Cutting head turns 30° |
| BO 441.2 | Fixed cutting head |

Silberschnitt

Oil Glass Cutter for Lead Glazing



With replaceable, wide cutting head · high-quality carbide cutting wheel · plastic handle with transparent oil reservoir · solid brass finger grip · traditional shape · The larger cutting wheel serves as a guiding aid when cutting with templates. Cutting angle 127° · Straight edge stand-off distance 2.5 mm

| Art. No. | Description |
|-----------|--------------------|
| BO 441.3 | Fixed cutting head |
| BO 4010.4 | Spare cutting head |

Silberschnitt

2000 Special Glass Cutter



Toplife cutting wheel · plastic handle can be placed underneath the score to break the glass · very light-weight cutting head made of special alloy · very fine, smooth cutting · wheels not exchangeable · glass cutting angle 138° · Straight edge stand-off distance 2.5 mm · for 2 - 6 mm glass

| Art. No. | Plastic handle |
|------------|----------------|
| BO 2004.0 | blue |
| BO 2004.01 | orange |

Silberschnitt

2000 Strip Cutter



For efficient cutting of large quantities of equally wide glass strips · adjustable strip width (max. 2 cm) for right or left handers · Cutting angle 138°

| Art. No. | Stopper |
|------------|---------|
| BO 2005.0R | right |
| BO 2005.0L | left |

Silberschnitt

Transverse Handle for Oil Glass Cutters



Ergonomic transverse handle for optimum application of higher cutting pressure · can be fitted to the metal models of Silberschnitt glass cutters of series 2000, 4000 as well as BO 447.8 and BO 448.8 · individually adjustable to hand size

Art. No.

BO 2045.0

Silberschnitt

Easy Grip Carbide Glass Cutter



Cutting angle 120° · carbide cutting wheel for opalescent or hard glass · Cutting angle 120°

Art. No.

Description

BO 428.0

Integrated guide piece for straight-edge cutting

BO 424.0

Adjustable handle length

Silberschnitt

Easy Grip Glass Cutter



Red plastic handle · with economic cutting wheel made of special steel · integrated guide piece for cutting along straight edges · self-service packing
Cutting angle 120°

Art. No.

BO 128.01

Silberschnitt

Easy Grip Carbide Oil Glass Cutter



Blue plastic handle · with transparent reservoir to check oil supply · adjustable length of handle · Cutting angle 138° · Narrow cutting head

Art. No.

BO 444.0

Pliers

"ZAG-ZAG" Glass Nibbling Pliers



"The red one" · the all-purpose tool for universal Tiffany and mosaic work · with spring joint and splinter bag · for correction of breaking edges on outer radii · cuts like scissors!

Art. No. BO 703.01

"ZAG-ZAG" Glass Nibbling Pliers



"Profi" · a top quality tool · the professional pliers for the most demanding art glass requirements · with splinter bag · for Tiffany and art glass work · easy cutting of small glass parts

Art. No. BO 701.0

"ZAG-ZAG" Glass Nibbling Pliers



"Junior" · the basic model for beginners · with spring joint and splinter deflector · for correction of breaking edges on outer radii · cuts like scissors!

Art. No. BO 703.5

Glass Nibbling Pliers



Drop forged nibbling pliers with riveted hinge for mosaic work · black body · handles plastic coated

Art. No. BO 5008400

Silberschnitt

Cut Running Pliers



For Tiffany and art glass work · turnable pressure bar · perfect, splinter-free breaking of inner curves and narrow strips of glass · pressure bar and plate available as spare parts · Glass thickness up to 5 mm

| Art. No. | Description |
|------------|----------------------|
| BO 700.0 | Cut Running Pliers |
| BO 7002 | Spare pressure plate |
| BO 7003.01 | Spare pressure bar |

"Ringstar" Glass Running Pliers



Glass running pliers made of high-quality plastic. A window affords optimum sight of the cut.

Art. No. TG H120

Silberschnitt

JOKER



When breaking, distributes pressure and counter-pressure evenly over the surface, ensuring controlled and safe breaking of the glass · non-slip rubber · Glass thickness up to 5 mm · Dimensions 90 x 60 x 3 mm

Art. No. BO 707.0

JOBO Glass Breaking Device



Helpful to open cuts of circles and ovals or for breaking off strips by hand or on the table · for controlled breaks without risk of injury · the long sides have different curves · numbers indicate the curve on the opposite side · Glass thickness up to 6 mm

Art. No. BO 705.0

Grozing Pliers



Plastic coated handles · ground head · ideal for art glass work · small contact area · little strength required · less breaking risk
Length 160 mm · Jaw width 4 mm

Art. No. BO 089

"KNIPEX" Grozing Pliers



For art glazing · plastic-coated handles · ground head
Length 160 mm · Jaw width 9.5 mm

Art. No. BO 5008300

Grozing Pliers



Return spring
Jaw width 9.5 mm

Art. No. TG 22210

Grozing Pliers



Return spring
Jaw width 4 mm

Art. No. TG TR027

Glass Breaking Pliers



Plastic coated handle · ground head
Length 180 mm · Jaw width 24 mm · Colour black

Art. No. BO 50 081 18

Radius Glass Breaking Pliers



Ideal for rounding off corners of glass sheets quickly and easily before final polishing · precise break and long service life due to diamond-polished jaws

| Art.-Nr. | Radius |
|--------------|--------|
| BO 50 082 33 | 10 mm |
| BO 50 082 34 | 20 mm |
| BO 50 082 35 | 30 mm |



Container for Glass Cutters



To secure onto smooth, clean and non-porous surfaces with suction base

Art. No. BO 671.0



Container for Glass Cutters



Made from aluminium for safe storing

Art. No. BO 671.1

Silberschnitt**Cut Running Pliers**

All-metal · for 6-25 mm glass · with adjustment screw to set to individual glass thickness · optimum load transmission · also ideal to open straight cuts, corner cut-outs, etc.

| Art. No. | Description |
|----------|--|
| BO 704.0 | Silberschnitt Cut Running Pliers - 6 - 15 mm glass |
| BO 704.5 | Pressure Bar for BO 704.0 |
| BO 702.0 | Silberschnitt Cut Running Pliers - up to 25 mm glass |
| BO 702.5 | Pressure Bar for BO 702.0 |



Our tip: BO 704.5 + BO 702.5 for opening narrow strips

Silberschnitt**Scalloping Tool for Edge Decoration**

Quickly produces a regular scallop design on flat glass edges without the need for expensive machinery. The depth and width of the scallops can be adjusted to the desired dimensions regardless of the glass thickness · for 3-25 mm glass



| Art. No. | Description |
|----------|-------------------------------------|
| BO 719.0 | Scalloping Tool |
| BO 719.5 | Positioning Aid for Scalloping Tool |
| BO 719.1 | Spare chisel |

Circle Cutters

Silberschnitt**System 2000 Circle Cutter**

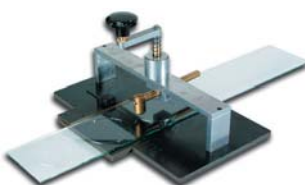
For use with oil glass cutters Silberschnitt 2000.S, 2000.M or 2000.P · allows excellent cutting quality by trailing Toplife cutting wheels and integrated supply of cutting fluid · oil glass cutter and transverse handle are not included (Please order separately).

| Art. No. | Max. diameter |
|-----------|---------------|
| BO 2511.0 | 60 cm |
| BO 2511.1 | 24" |
| BO 2514.0 | 120 cm |
| BO 2514.1 | 48" |
| BO 2516.0 | 200 cm |
| BO 2516.1 | 64" |

Silberschnitt**Circle Cutter with Ball-bearing Cutting Head**

Trailing carbide wheel in Toplife quality · improved break quality even for small radii · long service life · less cutting pressure Cutting angle 135° · minimum diameter 72 mm

| Art. No. | Max. diameter |
|-----------|----------------------------|
| BO 510.5 | 40 cm |
| BO 510.51 | 17" |
| BO 511.5 | 60 cm |
| BO 511.51 | 24" |
| BO 513.5 | 100 cm |
| BO 513.51 | 40" |
| BO 514.5 | 120 cm |
| BO 514.51 | 48" |
| BO 515.5 | 160 cm |
| BO 515.51 | 64" |
| BO 516.5 | 200 cm |
| BO 516.51 | 80" |
| BO 518.5 | Spare cutting head |
| BO 519.5 | Spare suction pad for base |
| BO 2449.2 | Spare wheel Holder |

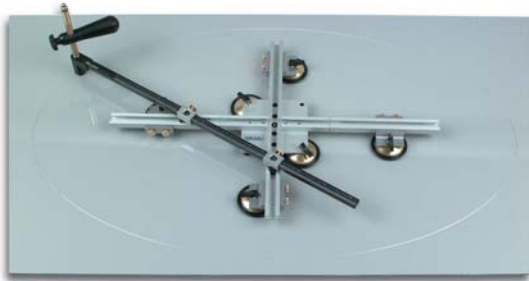
Silberschnitt**Circle Cutter for Repetitive Cuts**

Especially to cut small, round glass parts of 10 - 185 mm ø in series · trailing carbide cutting wheel with 155° cutting angle · different cutting angles for different glass thicknesses available separately · extension plates made of paperbased laminate are only available separately

| | |
|----------|----------|
| Art. No. | BO 534.0 |
|----------|----------|



Circle and Oval Cutter



From 22 - 122 cm · for glass up to 25 mm thick using different wheel holders · minimum diameter difference 6 cm · includes oil glass cutter 2000.S STANDARD 145°, T-handle, JOBO glass breaking device BO 705.0, cutting fluid, 2 felt-tip pens with adaptor · in practical aluminium case

Art. No. Max. diameter

BO 2550.0 22 - 122 cm



L-Squares without Brace - grey



These L-squares made of high quality material have two pegs made of blue plastic allowing the glass edge to be fully visible when positioned. The light grey material provides good contrast to the black felt on the cutting table.

Art. No. Length · Width

BO 029.00 30 cm / 17 cm · without pegs

BO 029.5 30 cm / 17 cm

BO 030.5 50 cm / 27 cm

BO 031.5 60 cm / 27 cm

BO 032.5 80 cm / 37 cm

BO 033.5 105 cm / 37 cm

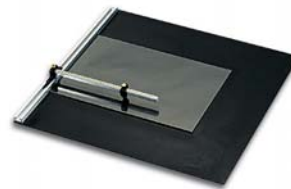
BO 034.5 135 cm / 47 cm

BO 035.5 150 cm / 47 cm

BO 036.5 175 cm / 47 cm



Roll-up Workplace



The mobile, roll-up workplace for glass artists and hobbyists · uses: work mat, strip cutter, circle cutter, trapezoid cutter · includes rubber mat, guide rail, strip and circle cutter, turret with 1 carbide cutting wheel 135° and detailed instruction manual

Art. No. BO 536.0



Geo-Master



Efficient cutting of glass: strips, parallelograms, mitres, diamond shapes, trapezoids, hexagons, octagons, for decorative wall lamps, star motifs, for small greenhouses, etc. Only in combination with roll-up workplace BO 536.0

Art. No. BO 536.1



L-Squares with Brace - black



These L-squares are manufactured in one piece from high-quality material. The integrated brace guarantees an especially high precision.

Art. No. Length · Width

BO 031.1 60 cm · 30 cm

BO 032.1 80 cm · 34 cm

BO 033.1 105 cm · 40 cm

BO 034.1 135 cm · 45 cm

BO 035.1 150 cm · 45 cm

BO 036.1 175 cm · 50 cm

Cutting Fluid



Cutting Fluid



Ensures a soft, precise break · binds glass particles · consistently unhindered run of wheel · low surface tension allows easy penetration into the cut

Art. No. Contents · Description

BO 027 50 ml · Dispenser bottle

BO 026 1 l · for manual cutting



The bandsaw attachment (without drive motor) allows you to transform almost any glass grinder (regardless whether European or American model) into a fully functional glass band saw in just a few steps. The fact that the DIAMANTOR saw band is diamond coated all around makes all the difference - because that makes it possible to cut even very tight curves and complicated shapes with ease and precision. The self-centering run of the belt means that the saw band does not need guides or complicated band run adjustments. You simply put the saw band on. The DIAMANTOR band saw attachment naturally uses the coolant of the glass grinder. It is suitable not only for sawing glass, but also for other hard materials like stone, steel, brass, ceramic or glass fibre-reinforced plastic.

Special Feature: Easy and precise cutting of shapes because the saw band is diamond coated all around.

| Art. No. | Description |
|------------|------------------------------|
| TG H200 | Band saw attachment |
| TG H201 | Spare saw band · 3.4 mm wide |
| TG H214 | Spare sponge · 48 x 103 mm |
| TG H216.01 | Spare drive cone |
| TG H218.01 | Spare elastic band with hook |



Complete system · consisting of flushing head, coolant reservoir, coolant circulation pump and foot switch (drilling machine is not included)

| | |
|----------|---------|
| Art. No. | TG H60F |
|----------|---------|



For use with the cooling head system, any ordinary stand drill becomes a glass drilling machine with internal cooling
Thread connection M10 x 1

| Art. No. | Diameter |
|----------|----------|
| TG H39 | 3 mm |
| TG H40 | 4 mm |
| TG H41 | 5 mm |
| TG H42 | 6 mm |
| TG H43 | 8 mm |
| TG H44 | 10 mm |
| TG H45 | 12 mm |
| TG H46 | 16 mm |
| TG H46A | 20 mm |
| TG H47 | 25 mm |
| TG H48 | 26 mm |
| TG H49 | 28 mm |
| TG H50 | 30 mm |
| TG H51 | 35 mm |
| TG H52 | 36 mm |
| TG H52A | 40 mm |
| TG H53 | 45 mm |
| TG H54 | 50 mm |
| TG H55 | 60 mm |
| TG H56 | 65 mm |
| TG H57 | 70 mm |



These diamond tools are suitable for use with all glass grinding machines of all manufacturers. When used with the H11 adapter, the grinding heads can also be used in standard drilling machines.

| Art. No. | Diameter · Version |
|----------|---------------------|
| TG H1 | 25 mm · standard |
| TG H1F | 25 mm · fine |
| TG H1P | 25 mm · power |
| TG H1T | 25 mm · turbo |
| TG H2 | 19 mm · standard |
| TG H2F | 19 mm · fine |
| TG H2P | 19 mm · power |
| TG H2T | 19 mm · turbo |
| TG H3 | 16 mm · standard |
| TG H3F | 16 mm · fine |
| TG H3P | 16 mm · power |
| TG H3SP | 16 mm · super power |



Grinder Bit



Can be used with all grinding machines.
Can also be used with drilling machines
in combination with the adapter H11
· Grinder awl with hole (drilling awl)

| Art. No. | Diameter · Version |
|----------|--------------------|
| TG H4 | 6 mm · standard |
| TG H4F | 6 mm · fine |
| TG H4P | 6 mm · power |
| TG H4T | 6 mm · turbo |
| TG H16 | 2 mm · standard |
| TG H9 | 3 mm · standard |
| TG H9F | 3 mm · fine |
| TG H9P | 3 mm · power |
| TG H9SP | 3 mm · super power |



Screw-in Grinder



For adaptor TG H12
Thread connection M6 x 0.5

| Art. No. | Diameter · Version |
|----------|---------------------|
| TG H13 | 3 mm · standard |
| TG H13F | 3 mm · fine |
| TG H13P | 3 mm · power |
| TG H13SP | 3 mm · super power |
| TG H14 | 6 mm · standard |
| TG H14F | 6 mm · fine |
| TG H14P | 6 mm · power |
| TG H14SP | 6 mm · super power |
| TG H15 | 10 mm · standard |
| TG H15F | 10 mm · fine |
| TG H15P | 10 mm · power |
| TG H15SP | 10 mm · super power |



Core Drills for Adaptor



For adaptor TG H12
Thread connection M6 x 0.5

| Art. No. | Diameter · Version |
|----------|--------------------|
| TG H17 | 4 mm · standard |
| TG H18 | 6 mm · standard |
| TG H19 | 8 mm · standard |
| TG H20 | 10 mm · standard |
| TG H21 | 12 mm · standard |
| TG H22 | 15 mm · standard |
| TG H24 | 25 mm · standard |



Drill Adaptor



Allows grinding heads to be fitted to an
electric drill

| | |
|----------|--------|
| Art. No. | TG H11 |
|----------|--------|



Bevel Grinding Head



Fits all grinding machines · in particular
type Kristall

| Art. No. | Angle · Diameter · Version |
|----------|------------------------------|
| TG H93 | 7° · 46 mm · standard |
| TG H93F | 7° · 46 mm · fine |
| TG H94 | 12° · 42 mm · standard |
| TG H94F | 12° · 42 mm · fine |
| TG H94PF | 12° · 42 mm · polishing fine |
| TG H96 | 34° · 45 mm · standard |



Grinder Adaptor



For mounting core drills and screw-in
bits onto a grinding machine · in
conjunction with drill adaptor Art. No.
TG H11, onto an electric drill

| | |
|----------|--------|
| Art. No. | TG H12 |
|----------|--------|



Mirror Grinder Head



Suitable for all machines · for edge and
ornamental grinding of mirrors · for
smoothing ribbed glass and for
double-sided arrissing of glass parts

| Art. No. | Diameter · Version |
|----------|--------------------|
| TG H7.1F | 10 mm · fine |
| TG H7 | 19 mm · standard |
| TG H7F | 19 mm · fine |



Mirror Grinder Head



Suitable for all machines · for edge and ornamental grinding of mirrors · for smoothing ribbed glass and for double-sided arriissing of glass parts

| Art. No. | Diameter · Version |
|----------|--------------------|
| TG H6 | 25 mm · standard |
| TG H6F | 25 mm · fine |



Lamp Grinder Head



Suitable for all machines · with a taper of 9° and 18° and a straight middle piece · allows tight positioning of grid pieces · for narrow solder seams

| Art. No. | Diameter · Version |
|----------|--------------------|
| TG H8 | 19 mm · standard |
| TG H8F | 19 mm · fine |



Jewellery Grinding Head

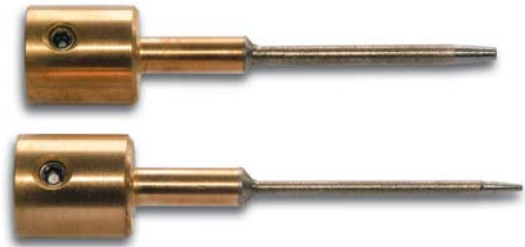


Indispensable when producing jewellery. A small groove can be ground into the periphery of the glass piece so that it can be set in silver wire, nylon cord, etc.

| Art. No. | TG H92 |
|----------|--------|
| | |



Grinding Head



For polishing and cleaning bead mandrel holes which result when crafting glass beads by flametorching

| Art. No. | Diameter · Version |
|----------|--------------------|
| TG H153F | 2 mm · fine |
| TG H154F | 3 mm · fine |

"Griffi" Glass Gripper



Securely grips small glass parts when grinding. Protects your fingers and prevents injury from sharp-edged glass pieces.

| Art. No. | TG H110 |
|----------|---------|
| | |

"Diapad" Abrasive Diamond Hand Pad



Flexible grinding area · smooths and grinds glass edges, ceramic and granite · can be used wet or dry
Size 90 x 55 x 27 mm

| Art. No. | Grit · Colour |
|--------------|---------------------|
| BO 50 079 12 | 120 / N 125 · black |
| BO 50 079 22 | 220 / N 74 · red |
| BO 50 079 36 | 360 / N 40 · yellow |

Hand Seaming Tool



Smooths both sides of glass edges simultaneously · prevents injuries
Grit 100

| Art. No. | Description |
|--------------|--------------------|
| BO 50 073 00 | Hand seaming tool |
| BO 50 073 01 | Replacement stones |

Chip Brush



For removing glass splinters on cutting table surfaces · indispensable for every glazier

| Art. No. | TG 070 |
|----------|--------|
| | |

Seminars



- ✓ *Thorough knowledge from glaziers for glaziers.*
- ✓ *Improve your skills on one or two days of intensive training.*
- ✓ *Put theoretical knowledge directly into practical use.*



Surface Bonding



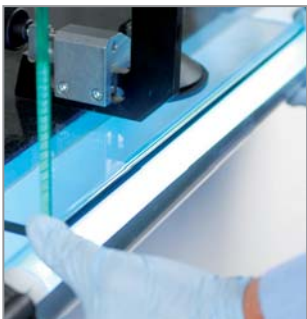
- Selecting the suitable adhesive system and calculating how much is needed
- Products for cleaning, useful aids and tools
- Curing methods and their effects, with examples
- Pre-treatment and methods of application
- Evaluating location and situation: Outdoor and indoor applications subject to hot / cold temperatures
- "Glass substrates" and their particular properties in adhesive bonds
- Sample applications from real life
- Creating designs and working with motifs
- Artistic surface bonding technology
- Autoclave-free laminating in the Verifix Airstream

Added value and benefits for you

A facade, balustrade or interior door featuring genuine antique or fused glass is made possible by surface bonding and stands out above the ordinary. With this bonding technology you can expand your business potential significantly.



UV Bonding



- Technical basics of glass bonding
- Different processing steps of UV bonding
- Materials and products for glass bonding
- The use of diverse UV adhesives and UV lamps
- Working with various fixation devices
- Construction of a reference display board showing different types of adhesives
- Typical mistakes in glass bonding and how to avoid them
- Calculation of resulting forces and amount of adhesive required
- Useful tools for efficient production of small and large series: portable bonding units, bonding tables, light tunnels
- Construction of a model showcase with fittings by each seminar participant

Added value and benefits for you

Under professional guidance you will construct reference models, preparing you to be able to build sophisticated bonded glass constructions successfully. Learn to organize your workflow more effectively, thus allowing you to produce your constructions more quickly, reliably and efficiently.



Glass Cutting



- Using the Silberschnitt System 2000
- Cutting thick glass in strips and circles
- Corner cutouts of glass up to 15 mm thick and lateral cutouts up to 12 mm without drilling or sawing
- "Open cuts" – "opening" glass cuts without breaking
- Physical rules important when opening glass cuts
- Fracture analysis
- Minimum post-processing thanks to high quality break edges
- Useful aids for daily work
- Working with various special glass cutters
- Features of Cutmaster® Platinum

Added value and benefits for you

Cutting sophisticated or special shapes is no longer a problem. The glass cutting techniques you learn will help you to work much more efficiently.

Seminar hotline

Find out more under:
02129 5568-416 or
harald.lucas@bohle.de



Germany

Bohle AG - Head Office
Dieselstraße 10
D - 42781 Haan

T +49 2129 5568-0
F +49 2129 5568-281

info@bohle.de