



Selection for professionals

Grinding and Polishing Wheels for Straight Line Edgers

This is Bohle

The Bohle Group is Europe's leading manufacturer and supplier of tools, machines and accessories for glass processing and finishing. The family business, founded in 1923, is now represented by over 300 employees at numerous locations in Germany and abroad. Divided into the product divisions Handling, Glass Cutting (manual and automatic), Glass Bonding, Glazing, Tools, Machinery, Fittings and Surface Technology, the total product range is precisely tailored to the respective customer groups from trade, industry and retail.

Quality is the leading principle at Bohle – in every area. To live up to this standard, the company develops and manufactures many products themselves. A modern logistics centre quickly dispatches the ordered goods to the customer.

The Bohle modular principle



If you work with glass, Bohle is the right partner for you. The full product range offers everything that the glass professional needs in his daily work, all from a single source. Over 8000 products reflect the entire scope of glass processing. But providing top quality products is not our only strength. With over 85 years of experience, Bohle has become an expert problem solver and innovative creative

force that goes beyond the product itself. No matter what challenges you are faced with - the Bohle modular system offers you the elements that can advance you and your business.

D

GB

F

I

E

NL

Transportrichtung Glas	Glass travel direction	Direction de traction du verre	Direzione di trasporto vetro	Dirección de transporte vidrio	Transportrichting glas
Schleifen	Grinding	Ponçage	Molare	Cantear	Slijpen
Polishingen	Polishing	Polir	Lucidare	Abrillantar	Polijsten
Scheiben-Typ	Wheel type	Type de disque	Tipo di Mola	Tipo de muela	Type schijf
Verwendung	Application	Application	Utilizzo	Aplicación	Gebruik
∅ außen	Outside ∅	∅ Extérieur	∅ Esterno	∅ Exterior	∅ Buiten
∅ Bohrung	Bore ∅	∅ Perçage	∅ Foro	∅ Agujero	∅ Boring
Werkzeughöhe	Tool thickness	Épaisseur	Altezza utensile	Altura herramienta	Gereedschaphoogte
Scheiben-Typ	Wheel type	Type de disque	Tipo di Mola	Tipo de muela	Type schijf
Diamant	Diamond	Diamant	Diamantata	Diamante	Diamant
Segmentiert	Segmented	Segmenté	A settori	Segmentado	Gesegmenteerd
Topfscheibe	Cup wheel	Meule-boisseau	Mola a tazza	Muela de taza	Komschijf
Umfangsscheibe	Peripheral wheel	Meule ciconférentielle	Mola periferica	Muela periférica	Randschijf
Schleif-Polishing	Grinding-Polishing	Rodage-Polir	In pietra	Pulidora-Canto	Slijp-polijschijf
Polieren	Polishing	Polir	Lucidante	Abrillantar	Polijsten
Cerium	Cerium	Cérium	Cerio	Cerio	Cerium
Verwendung	Application	Application	Utilizzo	Aplicación	Gebruik
Kante	Edge	Joint	Filo	Esquina	Kant
Saum	Arris	Arête	Filetto	Canto	Chanfrein
Gehrung	Mitre	Chanfrein	Smusso	Ángulo variable	Verstek
Fase	Bevel	Onglet	Bisello	Bisel	Facet



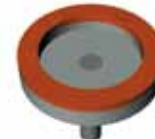
①



②



③



④

Glass travel direction

Baudin 481 segm.S+B, without Mitre

Pos.	Grinding	Polishing (A)	Polishing (B)	Wheel type	Application	Outside \varnothing /mm	Bore \varnothing /mm	Tool thickness/mm
1	BO 547114S			Diamond	Edge	150	40	36
2		BO 5470132	BO 5470285	Polishing	Edge	150	70	40
3		BO 5470133	BO 5470239	Grinding-Polishing	Arris	150	70	40
4		BO 5470133	BO 5470239	Grinding-Polishing	Arris	150	70	40



①



②



③



④



⑤

Glass travel direction

Baudin 581 segm.S+B , without Mitre

Pos.	Grinding	Polishing Type A	Polishing Type B	Wheel type	Application	Outside \varnothing /mm	Bore \varnothing /mm	Tool thickness/mm
1	BO 547114S			Diamond	Edge	150	40	36
2		BO 5470132	BO 5470287	Polishing	Edge	150	70	40
3		BO 5470134	BO 5470236	Polishing A 80 (Type B Cerium)	Edge	130	70	30
4		BO 5470133	BO 5470239	Polishing	Arris	150	70	40
5		BO 5470133	BO 5470239	Polishing	Arris	150	70	40



①



②



③



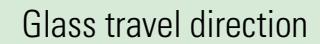
④



⑤



⑥

Glass travel direction 

Baudin 681 segm.S+B, without Mitre

Pos.	Grinding	Polishing Type A	Polishing Type B	Wheel type	Application	Outside \varnothing /mm	Bore \varnothing /mm	Tool thickness/mm
1	BO 547115S			Diamond	Edge	150	40	36
2	BO 547116S			Diamond	Edge	150	40	36
3		BO 5470132	BO 5470287	Polishing	Edge	150	70	40
4		BO 5470135	BO 5470236	Polishing Cerium	Edge	150	70	40
5		BO 5470133	BO 5470239	Polishing	Arris	150	70	40
6		BO 5470133	BO 5470236	Polishing (Type A Cerium)	Arris	150	70	40



①



②



③



④



⑤



⑥



⑦



⑧

Baudin 881 segm.S+B, without Mitre

Pos.	Grinding	Polishing Type A	Polishing Type B	Wheel type	Application	Outside \varnothing /mm	Bore \varnothing /mm	Tool thickness/mm
1	BO 547115S			Diamond	Edge	150	40	36
2	BO 547116S			Diamond	Edge	150	40	36
3		BO 5470132	BO 5470287	Polishing	Edge	150	70	40
4		BO 5470134	BO 5470236	Polishing A 80 (Type B Cerium)	Edge	150	70	30
5	BO 547117S			Diamond	Arris	150	40	36
6		BO 5470133	BO 5470240	Polishing	Arris	150	70	35
7	BO 547117S			Diamond	Arris	150	40	36
8		BO 5470133	BO 5470240	Polishing	Arris	150	70	35



①



②



③



④



⑤



⑥




⑦



⑧

Baudin 881-332 segm.S+B, without Mitre

Glass travel direction 

Pos.	Grinding	Polishing Type A	Polishing Type B	Wheel type	Application	Outside \varnothing /mm	Bore \varnothing /mm	Tool thickness/mm
1	BO 547115S			Diamond	Edge	150	40	36
2	BO 547114S			Diamond	Edge	150	40	36
3	BO 547116S			Diamond	Edge	150	70	40
4		BO 5470132	BO 5470286	Polishing	Edge	150	70	40
5		BO 5470134	BO 5470287	Polishing	Edge	150	70	40
6		BO 5470135	BO 5470236	Polishing Cerium	Edge	150	70	30
7		BO 5470133	BO 5470241	Grinding-Polishing	Arris	150	40	36
8		BO 5470133	BO 5470241	Grinding-Polishing	Arris	150	40	36



Baudin 981 segm.S+B, without Mitre

Glass travel direction

Pos.	Grinding	Polishing Type A	Polishing Type B	Wheel type	Application	Outside \varnothing /mm	Bore \varnothing /mm	Tool thickness/mm
1	BO 547115S			Diamond	Edge	150	40	36
2	BO 547116S			Diamond	Edge	150	40	36
3		BO 5470136	BO 5470286	Polishing	Edge	150	70	40
4		BO 5470134	BO 5470287	Polishing	Edge	150	70	36
5		BO 5470135	BO 5470236	Polishing Cerium	Edge	150	70	30
6	BO 547117S			Diamond	Arris	150	40	36
7		BO 5470133	BO 5470240	Polishing	Arris	150	70	35
8	BO 547117S			Diamond	Arris	150	40	36
9		BO 5470133	BO 5470240	Polishing	Arris	150	70	35



Bavelloni GEMY 6

Pos.	Grinding	Polishing Type A	Polishing Type B	Wheel type	Application	Outside \varnothing /mm	Bore \varnothing /mm	Tool thickness/mm
1	BO 54 700 04			Diamond	Edge	150	10	35
2	BO 54 700 03			Diamond	Edge	150	10	35
3		BO 54 701 61*	BO 54 702 11	Grinding-Polishing	Arris	150 (A) / 100 (B)	120 (A) / 11 (B)	30 (A) / 35 (B)
4		BO 54 701 61*	BO 54 702 11	Grinding-Polishing	Arris	150 (A) / 100 (B)	120 (A) / 11 (B)	30 (A) / 35 (B)
5		BO 54 701 26	BO 54 702 12	Polishing	Edge	150	70	40
6		BO 54 701 07	BO 54 702 13	Polishing (Type A Cerium)	Edge	150	70	30 (A) / 40 (B)

*Peripheral wheels

Bavelloni GEMY 6 segm.

Pos.	Grinding	Polishing Type A	Polishing Type B	Wheel type	Application	Outside \varnothing /mm	Bore \varnothing /mm	Tool thickness/mm
1	BO 54 711 00			Diamond (Segmented)	Edge	150	10	35
2	BO 54 711 01			Diamond (Segmented)	Edge	150	10	35
3		BO 54 701 61*	BO 54 702 11	Grinding-Polishing	Arris	150 (A) / 100 (B)	120 (A) / 11 (B)	30 (A) / 35 (B)
4		BO 54 701 61*	BO 54 702 11	Grinding-Polishing	Arris	150 (A) / 100 (B)	120 (A) / 11 (B)	30 (A) / 35 (B)
5		BO 54 701 26	BO 54 702 12	Polishing	Edge	150	70	40
6		BO 54 701 07	BO 54 702 13	Polishing (Type A Cerium)	Edge	150	70	30 (A) / 40 (B)

*Peripheral wheels



Bavelloni GEMY 8

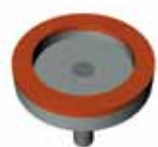
Pos.	Grinding	Polishing Type A	Polishing Type B	Wheel type	Application	Outside \varnothing /mm	Bore \varnothing /mm	Tool thickness/mm
1	BO 54 700 04			Diamond	Edge	150	10	35
2	BO 54 700 03			Diamond	Edge	150	10	35
3	BO 54 700 20			Diamond	Arris	150	10	35
4	BO 54 700 20			Diamond	Arris	150	10	35
5		BO 54 701 60*	BO 54 702 14	Polishing	Arris	150 (A) / 100 (B)	110 (A) / 11 (B)	30 (A) / 35 (B)
6		BO 54 701 60*	BO 54 702 14	Polishing	Arris	150 (A) / 100 (B)	110 (A) / 11 (B)	30 (A) / 35 (B)
7		BO 54 701 27	BO 54 702 12	Polishing	Edge	150	70	30 (A) / 40 (B)
8		BO 54 701 10	BO 54 702 13	Polishing (Type A Cerium)	Edge	150	70	30 (A) / 40 (B)

*Peripheral wheels

Bavelloni GEMY 8 segm.

Pos.	Grinding	Polishing Type A	Polishing Type B	Wheel type	Application	Outside \varnothing /mm	Bore \varnothing /mm	Tool thickness/mm
1	BO 54 711 00			Diamond (Segmented)	Edge	150	10	35
2	BO 54 711 01			Diamond (Segmented)	Edge	150	10	35
3	BO 54 700 20			Diamond	Arris	150	10	35
4	BO 54 700 20			Diamond	Arris	150	10	35
5		BO 54 701 60*	BO 54 702 14	Polishing	Arris	150 (A) / 100 (B)	110 (A) / 11 (B)	30 (A) / 35 (B)
6		BO 54 701 60*	BO 54 702 14	Polishing	Arris	150 (A) / 100 (B)	110 (A) / 11 (B)	30 (A) / 35 (B)
7		BO 54 701 27	BO 54 702 12	Polishing	Edge	150	70	30 (A) / 40 (B)
8		BO 54 701 10	BO 54 702 13	Polishing (Type A Cerium)	Edge	150	70	30 (A) / 40 (B)

*Peripheral wheels



⑦



⑥



⑤



④



③



②



①

Glass travel direction

Bavelloni MV7

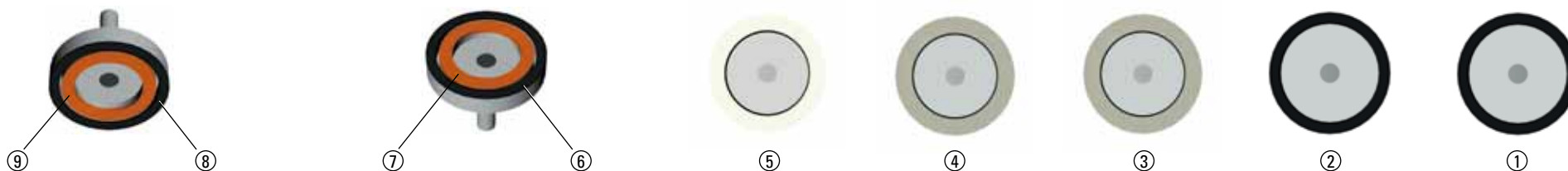
Pos.	Grinding	Polishing Type A	Polishing Type B	Wheel type	Application	Outside ø/mm	Bore ø/mm	Tool thickness/mm
1	BO 54 700 04			Diamond	Edge	150	10	35
2	BO 54 700 03			Diamond	Edge	150	10	35
3		BO 54 701 06	BO 54 702 09	Polishing	Edge	150	70	30
4		BO 54 701 06	BO 54 702 09	Polishing	Edge	150	70	30
5		BO 54 701 07*	BO 54 702 10	Polishing (Type A Cerium)	Edge	150	70	30
6		BO 54 701 08	BO 54 702 17	Grinding-Polishing	Arris	100	10 (A) / 11 (B)	40 (A) / 35 (B)
7		BO 54 701 08	BO 54 702 17	Grinding-Polishing	Arris	100	10 (A) / 11 (B)	40 (A) / 35 (B)

*alternative BO 54 701 10 (Cerium)

Bavelloni MV7 segm.

Pos.	Grinding	Polishing Type A	Polishing Type B	Wheel type	Application	Outside ø/mm	Bore ø/mm	Tool thickness/mm
1	BO 54 711 00			Diamond (Segmented)	Edge	150	10	35
2	BO 54 711 00			Diamond (Segmented)	Edge	150	10	35
3		BO 54 701 06	BO 54 702 09	Polishing	Edge	150	70	30
4		BO 54 701 06	BO 54 702 09	Polishing	Edge	150	70	30
5		BO 54 701 07*	BO 54 702 10	Polishing (Type A Cerium)	Edge	150	70	30
6		BO 54 701 08	BO 54 702 17	Grinding-Polishing	Arris	100	10 (A) / 11 (B)	40 (A) / 35 (B)
7		BO 54 701 08	BO 54 702 17	Grinding-Polishing	Arris	100	10 (A) / 11 (B)	40 (A) / 35 (B)

*alternative BO 54 701 10 (Cerium)



Bavelloni MV9 old type

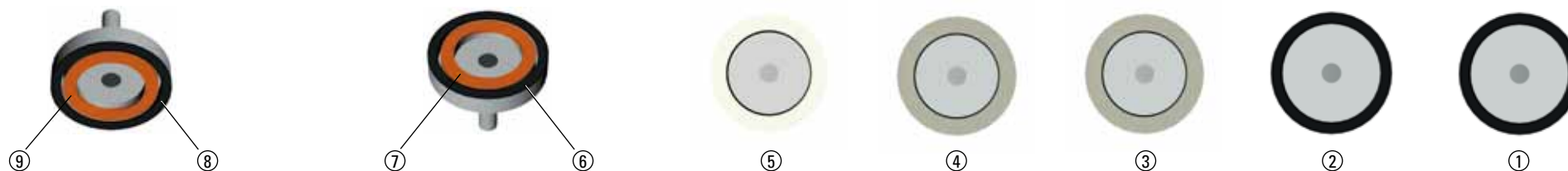
Pos.	Grinding	Polishing Type A	Polishing Type B	Wheel type	Application	Outside ø/mm	Bore ø/mm	Tool thickness/mm
1	BO 54 700 04			Diamond	Edge / Mitre	150	10	35
2	BO 54 700 03			Diamond	Edge / Mitre	150	10	35
3		BO 54 701 06	BO 54 702 15	Polishing	Edge / Mitre	150	70 (A) / 10 (B)	30 (A) / 36 (B)
4		BO 54 701 06	BO 54 702 15	Polishing	Edge / Mitre	150	70 (A) / 10 (B)	30 (A) / 36 (B)
5		BO 54 701 07	BO 54 702 16	Polishing (Type A Cerium)	Edge / Mitre	150	70 (A) / 10 (B)	30 (A) / 36 (B)
6	BO 54 712 20			Diamond	Arris	160	130	50
7		BO 54 701 09*	BO 54 702 17**	Polishing	Arris	130 (A) / 100 (B)	12 (A) / 11 (B)	40 (A) / 35 (B)
8	BO 54 712 20			Diamond	Arris	160	130	50
9		BO 54 701 09*	BO 54 702 17**	Polishing	Arris	130 (A) / 100 (B)	12 (A) / 11 (B)	40 (A) / 35 (B)

*Peripheral wheel / Cup wheelring in combination with diamond wheel , **without diamond wheel

Bavelloni MV9 old type segm.

Pos.	Grinding	Polishing Type A	Polishing Type B	Wheel type	Application	Outside ø/mm	Bore ø/mm	Tool thickness/mm
1	BO 54 711 00			Diamond (Segmented)	Edge / Mitre	150	10	35
2	BO 54 711 01			Diamond (Segmented)	Edge / Mitre	150	10	35
3		BO 54 701 06	BO 54 702 15	Polishing	Edge / Mitre	150	70 (A) / 10 (B)	30 (A) / 36 (B)
4		BO 54 701 06	BO 54 702 15	Polishing	Edge / Mitre	150	70 (A) / 10 (B)	30 (A) / 36 (B)
5		BO 54 701 07	BO 54 702 16	Polishing (Type A Cerium)	Edge / Mitre	150	70 (A) / 10 (B)	30 (A) / 36 (B)
6	BO 54 712 20			Diamond	Arris	160	130	50
7		BO 54 701 09*	BO 54 702 17**	Polishing	Arris	130 (A) / 100 (B)	12 (A) / 11 (B)	40 (A) / 35 (B)
8	BO 54 712 20			Diamond	Arris	160	130	50
9		BO 54 701 09*	BO 54 702 17**	Polishing	Arris	130 (A) / 100 (B)	12 (A) / 11 (B)	40 (A) / 35 (B)

*Peripheral wheel / Cup wheelring in combination with diamond wheel , **without diamond wheel



Bavelloni MV9 old type

Pos.	Grinding	Polishing Type A	Polishing Type B	Wheel type	Application	Outside ø/mm	Bore ø/mm	Tool thickness/mm
1	BO 54 700 04			Diamond	Edge / Mitre	150	10	35
2	BO 54 700 03			Diamond	Edge / Mitre	150	10	35
3		BO 54 701 06	BO 54 702 09	Polishing	Edge / Mitre	150	70	30
4		BO 54 701 06	BO 54 702 09	Polishing	Edge / Mitre	150	70	30
5		BO 54 701 10	BO 54 702 10	Polishing (Type A Cerium)	Edge / Mitre	150	70	30
6	BO 54 712 20			Diamond	Arris	160	130	50
7		BO 54 701 09*	BO 54 702 17**	Polishing	Arris	130 (A) / 100 (B)	12 (A) / 11 (B)	40 (A) / 35 (B)
8	BO 54 712 20			Diamond	Arris	160	130	50
9		BO 54 701 09*	BO 54 702 17**	Polishing	Arris	130 (A) / 100 (B)	12 (A) / 11 (B)	40 (A) / 35 (B)

*Peripheral wheel /Cup wheelring in combination with diamond wheel , **without diamond wheel

Bavelloni MV9 old type segm.

Pos.	Grinding	Polishing Type A	Polishing Type B	Wheel type	Application	Outside ø/mm	Bore ø/mm	Tool thickness/mm
1	BO 54 711 00			Diamond (Segmented)	Edge / Mitre	150	10	35
2	BO 54 711 01			Diamond (Segmented)	Edge / Mitre	150	10	35
3		BO 54 701 06	BO 54 702 09	Polishing	Edge / Mitre	150	70	30
4		BO 54 701 06	BO 54 702 09	Polishing	Edge / Mitre	150	70	30
5		BO 54 701 10	BO 54 702 10	Polishing (Type A Cerium)	Edge / Mitre	150	70	30
6	BO 54 712 20			Diamond	Arris	160	130	50
7		BO 54 701 09*	BO 54 702 17**	Polishing	Arris	130 (A) / 100 (B)	12 (A) / 11 (B)	40 (A) / 35 (B)
8	BO 54 712 20			Diamond	Arris	160	130	50
9		BO 54 701 09*	BO 54 702 17**	Polishing	Arris	130 (A) / 100 (B)	12 (A) / 11 (B)	40 (A) / 35 (B)

*Peripheral wheel /Cup wheelring in combination with diamond wheel , **without diamond wheel



Bavelloni PR 88

Pos.	Grinding	Polishing Type A	Polishing Type B	Wheel type	Application	Outside \varnothing /mm	Bore \varnothing /mm	Tool thickness/mm
1	BO 54 700 04			Diamond	Edge	150	10	35
2	BO 54 700 03			Diamond	Edge	150	10	35
3	BO 54 700 05			Diamond	Arris	100	10	35
4		BO 54 701 08	BO 54 702 08	Polishing	Arris	100 (A) / 125 (B)	10 (A) / 50 (B)	40 (A) / 35 (B)
5	BO 54 700 05			Diamond	Arris	100	10	35
6		BO 54 701 08	BO 54 702 08	Polishing	Arris	100 (A) / 125 (B)	10 (A) / 50 (B)	40 (A) / 35 (B)
7		BO 54 701 06	BO 54 702 09	Polishing	Edge	150	70	30
8		BO 54 701 07	BO 54 702 10	Polishing (Type A Cerium)	Edge	150	70	30

Bavelloni PR 88 segm.

Pos.	Grinding	Polishing Type A	Polishing Type B	Wheel type	Application	Outside \varnothing /mm	Bore \varnothing /mm	Tool thickness/mm
1	BO 54 711 00			Diamond (Segmented)	Edge	150	10	35
2	BO 54 711 01			Diamond (Segmented)	Edge	150	10	35
3	BO 54 700 05			Diamond	Arris	100	10	35
4		BO 54 701 08	BO 54 702 08	Polishing	Arris	100 (A) / 125 (B)	10 (A) / 50 (B)	40 (A) / 35 (B)
5	BO 54 700 05			Diamond	Arris	100	10	35
6		BO 54 701 08	BO 54 702 08	Polishing	Arris	100 (A) / 125 (B)	10 (A) / 50 (B)	40 (A) / 35 (B)
7		BO 54 701 06	BO 54 702 09	Polishing	Edge	150	70	30
8		BO 54 701 07	BO 54 702 10	Polishing (Type A Cerium)	Edge	150	70	30



③



②



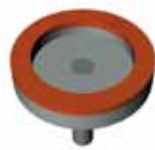
①

Glass travel direction

Bavelloni SB/10

Pos.	Grinding	Polishing Type A	Polishing Type B	Wheel type	Application	Outside \varnothing /mm	Bore \varnothing /mm	Tool thickness/mm
1	BO 54 713 30			Diamond (Cup wheel)	Edge, Bevel	150	10	40
2	BO 54 713 31			Diamond (Cup wheel)	Edge, Bevel	150	10	40
3		BO 54 701 19	BO 54 702 60	Polishing (Peripheral wheel)	Edge / Arris	150	22	20
3		BO 54 701 20	BO 54 702 63	Polishing (Peripheral wheel)	Edge / Arris	150	22	20
3		BO 54 701 62	BO 54 702 61*	Polishing (Peripheral wheel)	Edge / Arris (10 mm)	150 (A) / 100 (B)	22	15
3		BO 54 701 63	BO 54 702 61*	Polishing (Peripheral wheel)	Edge / Arris (12 mm)	150 (A) / 100 (B)	22	20 (A) / 15 (B)
3		BO 54 701 63	BO 54 702 62**	Polishing (Peripheral wheel)	Edge / Arris (15 mm)	150 (A) / 100 (B)	22	20
3		BO 54 701 64	BO 54 702 62**	Polishing (Peripheral wheel)	Edge / Arris (19 mm)	150 (A) / 100 (B)	22	25 (A) / 20 (B)

*alternative BO 54 702 64, **alternative BO 54 702 65



④



③



②

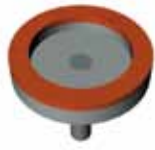


①

Glass travel direction

Bodo Gerhard K 102 S-4, K 1504

Pos.	Grinding	Polishing Type A	Polishing Type B	Wheel type	Application	Outside \varnothing /mm	Bore \varnothing /mm	Tool thickness/mm
1	BO 54 700 15			Diamond	Edge	150	30	40
2		BO 54 701 28	BO 54 702 00	Polishing	Edge	150	40	40
3			BO 54 702 05	Grinding-Polishing	Arris	125	30	35
4			BO 54 702 05	Grinding-Polishing	Arris	125	30	35



⑤



④



③



②



①

Glass travel direction

Bodo Gerhard K 102 S-5, K1505

Pos.	Grinding	Polishing Type A	Polishing Type B	Wheel type	Application	Outside \varnothing /mm	Bore \varnothing /mm	Tool thickness/mm
1	BO 54 700 15			Diamond	Edge	150	30	40
2		BO 54 701 28	BO 54 702 00	Polishing	Edge	150	40	40
3			BO 54 702 01	Polishing	Edge	150	40	40
alternative		BO 54 701 29	BO 54 702 02	Polishing (Cerium)	Edge	150	40	40 (A) / 30 (B)
4			BO 54 702 05	Grinding-Polishing	Arris	125	30	35
5			BO 54 702 05	Grinding-Polishing	Arris	125	30	35



Bodo Gerhard K 103 S/SE, K 1507

Pos.	Grinding	Polishing Type A	Polishing Type B	Wheel type	Application	Outside \varnothing /mm	Bore \varnothing /mm	Tool thickness/mm
1	BO 54 700 15			Diamond	Edge	150	30	40
2			BO 54 702 04	Polishing	Edge	130	40	40
3			BO 54 702 07	Polishing (Cerium)	Edge	130	40	35
4	BO 54 700 16			Diamond	Arris	125	30	40
5	BO 54 700 16			Diamond	Arris	125	30	40
6			BO 54 702 05	Grinding-Polishing	Arris	125	30	75
7			BO 54 702 05	Grinding-Polishing	Arris	125	30	75



⑥



⑤



④



③



②



①

Glass travel direction

Bodo Gerhard K 200 GE

Pos.	Grinding	Polishing Type A	Polishing Type B	Wheel type	Application	Outside ø/mm	Bore ø/mm	Tool thickness/mm
1	BO 54 700 13			Diamond	Edge	150	30	40
2	BO 54 700 14			Diamond	Edge / Mitre	150	30	40
3		BO 54 701 28	BO 54 702 00	Polishing	Edge / Mitre	150	40	40
alternative		BO 54 701 28	BO 54 702 06	Polishing	Edge / Mitre	150 (A) / 130 (B)	40	40
4		BO 54 701 29	BO 54 702 01	Polishing (Type A Cerium)	Edge / Mitre	150	40	40
alternative		BO 54 701 29	BO 54 702 07	Polishing (Cerium)	Edge / Mitre	150 (A) / 130 (B)	40	40 (A) / 35 (B)
5			BO 54 702 03	Grinding-Polishing	Arris	125	30	35
6			BO 54 702 03	Grinding-Polishing	Arris	125	30	35

Bodo Gerhard K 200 GE segm.

Pos.	Grinding	Polishing Type A	Polishing Type B	Wheel type	Application	Outside ø/mm	Bore ø/mm	Tool thickness/mm
1	BO 54 741 00			Diamond (Segmented)	Edge / Mitre	150	30	40
2	BO 54 741 01			Diamond (Segmented)	Edge / Mitre	150	30	40
3		BO 54 701 28	BO 54 702 00	Polishing	Edge / Mitre	150	40	40
alternative		BO 54 701 28	BO 54 702 06	Polishing	Edge / Mitre	150 (A) / 130 (B)	40	40
4		BO 54 701 29	BO 54 702 01	Polishing (Type A Cerium)	Edge / Mitre	150	40	40
alternative		BO 54 701 29	BO 54 702 07	Polishing (Cerium)	Edge / Mitre	150 (A) / 130 (B)	40	40 (A) / 35 (B)
5			BO 54 702 03	Grinding-Polishing	Arris	125	30	35
6			BO 54 702 03	Grinding-Polishing	Arris	125	30	35



⑥



⑤



④



①



②



③

Glass travel direction

Bodo Gerhard K 200 GE segm. for Mitre

Pos.	Grinding	Polishing Type A	Polishing Type B	Wheel type	Application	Outside \varnothing /mm	Bore \varnothing /mm	Tool thickness/mm
1	BO 54 741 00			Diamond (Segmented)	Edge / Mitre	150	30	40
2	BO 54 741 01			Diamond (Segmented)	Edge / Mitre	150	30	40
alter- native	BO 54 700 14			Diamond	Edge / Mitre	150	30	40
3		BO 54 701 28	BO 54 702 06	Polishing	Edge / Mitre	150 (A) / 130 (B)	40	40
4		BO 54 701 29	BO 54 702 07	Polishing (Type A Cerium)	Edge / Mitre	150 (A) / 130 (B)	40	40 (A) / 35 (B)
5			BO 54 702 03	Grinding-Polishing	Arris	125	30	35
6			BO 54 702 03	Grinding-Polishing	Arris	125	30	35



Bodo Gerhard K 300 E, K 3008

Pos.	Grinding	Polishing Type A	Polishing Type B	Wheel type	Application	Outside \varnothing /mm	Bore \varnothing /mm	Tool thickness/mm
1	BO 54 700 13			Diamond	Edge	150	30	40
2	BO 54 700 14			Diamond	Edge	150	30	40
3	BO 54 700 16			Diamond	Arris	125	30	40
4	BO 54 700 16			Diamond	Arris	125	30	40
5			BO 54 702 05	Polishing	Arris	125	30	75
6			BO 54 702 05	Polishing	Arris	125	30	75
7		BO 54 701 28	BO 54 702 00	Polishing	Edge	150	40	40
8		BO 54 701 29	BO 54 702 34	Polishing (Cerium)	Edge	150	40	40
alternative			BO 54 702 01	Polishing	Edge	150	40	40

Bodo Gerhard K 300 E segm.

Pos.	Grinding	Polishing Type A	Polishing Type B	Wheel type	Application	Outside \varnothing /mm	Bore \varnothing /mm	Tool thickness/mm
1	BO 54 741 00			Diamond (Segmented)	Edge	150	30	40
2	BO 54 741 01			Diamond (Segmented)	Edge	150	30	40
3	BO 54 700 16			Diamond	Arris	125	30	40
4	BO 54 700 16			Diamond	Arris	125	30	40
5			BO 54 702 05	Polishing	Arris	125	30	75
6			BO 54 702 05	Polishing	Arris	125	30	75
7		BO 54 701 28	BO 54 702 00	Polishing	Edge	150	40	40
8		BO 54 701 29	BO 54 702 34	Polishing (Cerium)	Edge	150	40	40



Bodo Gerhard K 300 GE, KG 3008

Pos.	Grinding	Polishing Type A	Polishing Type B	Wheel type	Application	Outside \varnothing /mm	Bore \varnothing /mm	Tool thickness/mm
1	BO 54 700 13			Diamond	Edge	150	30	40
2	BO 54 700 14			Diamond	Edge / Mitre	150	30	40
3		BO 54 701 28	BO 54 702 00	Polishing	Edge / Mitre	150	40	40
4		BO 54 701 29	BO 54 702 34	Polishing (Cerium)	Edge / Mitre	150	40	40
alternative			BO 54 702 01	Polishing	Edge / Mitre	150	40	40
5	BO 54 700 16			Diamond	Arris	125	30	40
6	BO 54 700 16			Diamond	Arris	125	30	40
7			BO 54 702 05	Polishing	Arris	125	30	75
8			BO 54 702 05	Polishing	Arris	125	30	75

Bodo Gerhard K 300 GE segm., KG 3008 segm.

Pos.	Grinding	Polishing Type A	Polishing Type B	Wheel type	Application	Outside \varnothing /mm	Bore \varnothing /mm	Tool thickness/mm
1	BO 54 741 00			Diamond (Segmented)	Edge / Mitre	150	30	40
2	BO 54 741 01			Diamond (Segmented)	Edge / Mitre	150	30	40
alternative	BO 54 700 14		Diamond	Diamond	Edge / Mitre	150	30	40
3		BO 54 701 52	BO 54 702 80	Polishing (Segmented)	Edge / Mitre	150	40	40
4		BO 54 701 29	BO 54 702 34	Polishing (Cerium)	Edge / Mitre	150	40	40
5	BO 54 700 16			Diamond	Arris	125	30	40
6	BO 54 700 16			Diamond	Arris	125	30	40
7			BO 54 702 05	Polishing	Arris	125	30	75
8			BO 54 702 05	Polishing	Arris	125	30	75



④



③



②



①

Glass travel direction

Bohle SL4328A/SL4328M

Pos.	Grinding	Polishing Type A	Polishing Type B	Wheel type	Application	Outside \varnothing /mm	Bore \varnothing /mm	Tool thickness/mm
1	BO 5470003			Diamond	Edge	150	12	35
alter- native	BO 5470003S*			Diamond	Edge	150	12	35
2		BO 5470127	BO 5470282*	Polishing	Edge	150	70	30
3	BO 5471340			Grinding-Polishing Diamond	Arris	130	12	35
4	BO 5471340			Grinding-Polishing Diamond	Arris	130	12	35

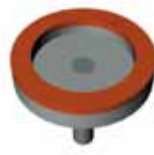
*Segmented



⑥



⑤



④



③



②

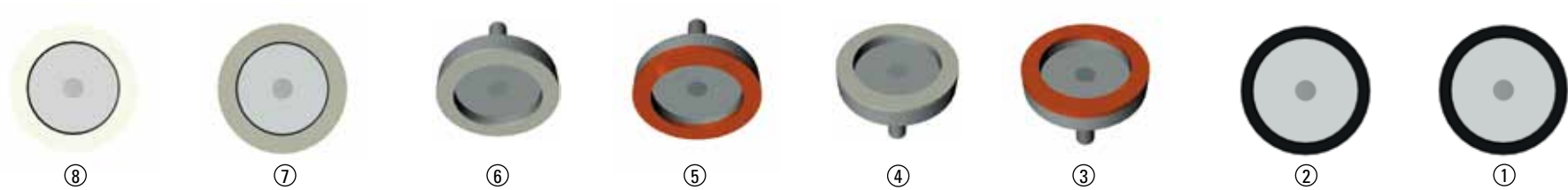


①

Bohle SL6328A

Pos.	Grinding	Polishing Type A	Polishing Type B	Wheel type	Application	Outside \varnothing /mm	Bore \varnothing /mm	Tool thickness/mm
1	BO 5470004			Diamond	Edge	150	12	35
alter- native	BO 5470004S*			Diamond	Edge	150	12	35
2	BO 5470003			Diamond	Edge	150	12	35
alter- native	BO 5470003S*			Diamond	Edge	150	12	35
3	BO 5471340			Grinding-Polishing Diamond	Arris	130	12	35
4	BO 5471340			Grinding-Polishing Diamond	Arris	130	12	35
5		BO 5470127	BO 5470282*	Polishing	Edge	150	70	30
6		BO 5470110	BO 5470236	Polishing Cerium	Edge	150	70	30

*Segmented



Bohle SL8328A

Pos.	Grinding	Polishing Type A	Polishing Type B	Wheel type	Application	Outside \varnothing /mm	Bore \varnothing /mm	Tool thickness/mm
1	BO 54 700 04			Diamond	Edge	150	12	35
alter- native	BO 54 700 04S*			Diamond	Edge	150	12	35
2	BO 5470003			Diamond	Edge	150	12	35
alter- native	BO 5470003S*			Diamond	Edge	150	12	35
3	BO 5471340			Grinding-Polishing Diamond	Arris	130	12	35
4		BO 5470140	BO 5470237	Polishing	Arris	130	12	35
5	BO 5471340			Grinding-Polishing Diamond	Arris	130	60	30
6		BO 5470140	BO 5470237	Polishing	Arris	130	60	30
7		BO 5470127	BO 5470282*	Polishing	Edge	150	70	30
8		BO 5470110	BO 5470236	Polishing Cerium	Edge	150	70	30

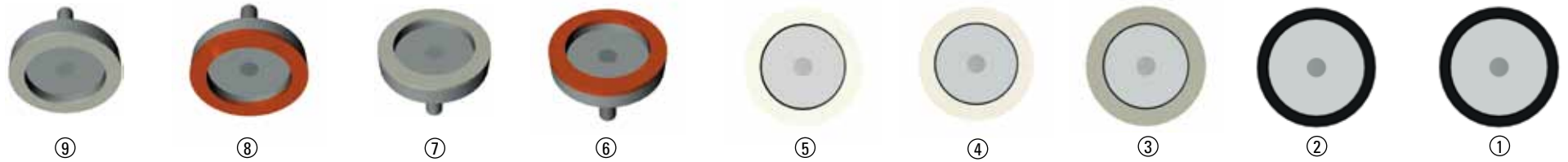
*Segmented



Bohle SL9328A

Pos.	Grinding	Polishing Type A	Polishing Type B	Wheel type	Application	Outside \varnothing /mm	Bore \varnothing /mm	Tool thickness/mm
1	BO 5470004			Diamond	Edge	150	12	35
alternative	BO 5470004S*			Diamond	Edge	150	12	35
2	BO 5470003			Diamond	Edge	150	12	35
alternative	BO 5470003S*			Diamond	Edge	150	12	35
3	BO 5471340			Grinding-Polishing Diamond	Arris	130	12	35
4		BO 5470140	BO 5470237	Polishing	Arris	130	60	30
5	BO 5471340			Grinding-Polishing Diamond	Arris	130	12	35
6		BO 5470140	BO 5470237	Polishing	Arris	130	60	30
7		BO 5470127	BO 5470282*	Polishing	Edge	150	70	30
8		BO 5470127	BO 5470283*	Polishing	Edge	150	70	30
9		BO 5470110	BO 5470236	Polishing Cerium	Edge	150	70	30

*Segmented



Bohle SL9328MA (Mitre)

Pos.	Grinding	Polishing Type A	Polishing Type B	Wheel type	Application	Outside \varnothing /mm	Bore \varnothing /mm	Tool thickness/mm
1	BO 54 70004			Diamond	Edge	150	12	35
alternative	BO 54 70004S*			Diamond	Edge	150	12	35
2	BO 5470003			Diamond	Edge	150	12	35
alternative	BO 5470003S*			Diamond	Edge	150	12	35
3		BO 5470127	BO 5470282*	Polishing	Edge	150	70	30
4		BO 5470127	BO 5470283*	Polishing	Edge	150	70	30
5		BO 5470110	BO 5470236	Polishing (Type A Cerium)	Edge	150	70	30
6	BO 5471340			Grinding- Polishing Diamond	Arris	130	12	35
7		BO 5470140	BO 5470237	Polishing	Arris	130	60	30
8	BO 5471340			Grinding- Polishing Diamond	Arris	130	12	35
9		BO 5470140	BO 5470237	Polishing	Arris	130	60	30

*Segmented



Bottero 108F segm. S+B

Glass travel direction

Pos.	Grinding	Polishing Type A	Polishing Type B	Wheel type	Application	Outside \varnothing /mm	Bore \varnothing /mm	Tool thickness/mm
1	BO 547110S			Diamond	Edge	150	50	30
2	BO 547111S			Diamond	Edge	150	50	30
3	BO 547112S			Diamond	Arris	150	50	30
4		BO 5470130	BO 5470243	Polishing	Arris	150	50	40
5	BO 547112S			Diamond	Arris	150	50	30
6		BO 5470130	BO 5470243	Polishing	Arris	150	50	40
7		BO 5470131	BO 5470289	Polishing	Edge	150	50	40
8			BO 5470242	Polishing (Type A Cerium)	Edge	150	50	40



Bottero 110FC segm. S+B

Pos.	Grinding	Polishing Type A	Polishing Type B	Wheel type	Application	Outside \varnothing /mm	Bore \varnothing /mm	Tool thickness/mm
1	BO 547110S			Diamond	Edge	150	40	30
2	BO 547113S			Diamond	Edge	150	40	30
3	BO 547111S			Diamond	Edge	150	40	40
4	BO 547112S			Diamond	Arris	150	40	30
5		BO 5470130	BO 5470243	Polishing	Arris	150	40	40
6	BO 547112S			Diamond	Arris	150	40	30
7		BO 5470130	BO 5470243	Polishing	Arris	150	40	40
8		BO 5470131	BO 5470288	Polishing	Edge	150	40	40
9			BO 5470289	Polishing	Edge	150	40	40
10			BO 5470242	Polishing (Cerium)	Edge	150	70	40

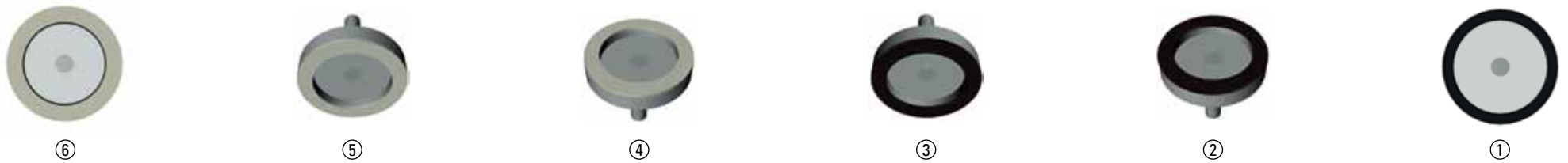


Schiatti FPS 10 old type

Pos.	Grinding	Polishing Type A	Polishing Type B	Wheel type	Application	Outside \varnothing /mm	Bore \varnothing /mm	Tool thickness/mm
1	BO 54 700 09			Diamond	Edge	150	25	35
2	BO 54 700 21			Diamond	Arris	100	20	35
3	BO 54 700 21			Diamond	Arris	100	20	35
4		BO 54 701 11	BO 54 702 18	Polishing	Arris	125	22	35
5		BO 54 701 11	BO 54 702 18	Polishing	Arris	125	22	35
6		BO 54 701 12	BO 54 702 20	Polishing	Edge	150	22	40

Schiatti FPS 10 old type segm.

Pos.	Grinding	Polishing Type A	Polishing Type B	Wheel type	Application	Outside \varnothing /mm	Bore \varnothing /mm	Tool thickness/mm
1	BO 54 721 01			Diamond (Segmented)	Edge	150	25	35
2	BO 54 700 21			Diamond	Arris	100	20	35
3	BO 54 700 21			Diamond	Arris	100	20	35
4		BO 54 701 11	BO 54 702 18	Polishing	Arris	125	22	35
5		BO 54 701 11	BO 54 702 18	Polishing	Arris	125	22	35
6		BO 54 701 12	BO 54 702 20	Polishing	Edge	150	22	40



Schiatti FPS 10 new type

Pos.	Grinding	Polishing Type A	Polishing Type B	Wheel type	Application	Outside \varnothing /mm	Bore \varnothing /mm	Tool thickness/mm
1	BO 54 700 09			Diamond	Edge	150	25	35
2	BO 54 700 08			Diamond	Arris	130	20	35
3	BO 54 700 08			Diamond	Arris	130	20	35
4		BO 54 701 11	BO 54 702 18	Polishing	Arris	125	22	35
5		BO 54 701 11	BO 54 702 18	Polishing	Arris	125	22	35
6		BO 54 701 12	BO 54 702 19	Polishing	Edge	150	22 (A) / 68 (B)	40

Schiatti FPS 10 new type segm.

Pos.	Grinding	Polishing Type A	Polishing Type B	Wheel type	Application	Outside \varnothing /mm	Bore \varnothing /mm	Tool thickness/mm
1	BO 54 721 01			Diamond (Segmented)	Edge	150	25	35
2	BO 54 700 08			Diamond	Arris	130	20	35
3	BO 54 700 08			Diamond	Arris	130	20	35
4		BO 54 701 11	BO 54 702 18	Polishing	Arris	125	22	35
5		BO 54 701 11	BO 54 702 18	Polishing	Arris	125	22	35
6		BO 54 701 12	BO 54 702 19	Polishing	Edge	150	22 (A) / 68 (B)	40



Schiatti FPS 10 S old type

Pos.	Grinding	Polishing Type A	Polishing Type B	Wheel type	Application	Outside \varnothing /mm	Bore \varnothing /mm	Tool thickness/mm
1	BO 54 700 09			Diamond	Edge	150	25	35
2	BO 54 700 21			Diamond	Arris	100	20	35
3	BO 54 700 21			Diamond	Arris	100	20	35
4		BO 54 701 11	BO 54 702 18	Polishing	Arris	125	22	35
5		BO 54 701 11	BO 54 702 18	Polishing	Arris	125	22	35
6		BO 54 701 12	BO 54 702 20	Polishing	Edge	150	22	40

Schiatti FPS 10 S old type segm.

Pos.	Grinding	Polishing Type A	Polishing Type B	Wheel type	Application	Outside \varnothing /mm	Bore \varnothing /mm	Tool thickness/mm
1	BO 54 721 01			Diamond (Segmented)	Edge	150	25	35
2	BO 54 700 21			Diamond	Arris	100	20	35
3	BO 54 700 21			Diamond	Arris	100	20	35
4		BO 54 701 11	BO 54 702 18	Polishing	Arris	125	22	35
5		BO 54 701 11	BO 54 702 18	Polishing	Arris	125	22	35
6		BO 54 701 12	BO 54 702 20	Polishing	Edge	150	22	40



Schiatti FPS 10 S

Pos.	Grinding	Polishing Type A	Polishing Type B	Wheel type	Application	Outside \varnothing /mm	Bore \varnothing /mm	Tool thickness/mm
1	BO 54 700 09			Diamond	Edge	150	25	35
2	BO 54 700 08			Diamond	Arris	130	20	35
3	BO 54 700 08			Diamond	Arris	130	20	35
4		BO 54 701 11	BO 54 702 18	Polishing	Arris	125	22	35
5		BO 54 701 11	BO 54 702 18	Polishing	Arris	125	22	35
6		BO 54 701 14	BO 54 702 19	Polishing	Edge	150	68	40

Schiatti FPS 10 S segm.

Pos.	Grinding	Polishing Type A	Polishing Type B	Wheel type	Application	Outside \varnothing /mm	Bore \varnothing /mm	Tool thickness/mm
1	BO 54 721 01			Diamond (Segmented)	Edge	150	25	35
2	BO 54 700 08			Diamond	Arris	130	20	35
3	BO 54 700 08			Diamond	Arris	130	20	35
4		BO 54 701 11	BO 54 702 18	Polishing	Arris	125	22	35
5		BO 54 701 11	BO 54 702 18	Polishing	Arris	125	22	35
6		BO 54 701 14	BO 54 702 19	Polishing	Edge	150	68	40



Schiatti FPS 15

Pos.	Grinding	Polishing Type A	Polishing Type B	Wheel type	Application	Outside \varnothing /mm	Bore \varnothing /mm	Tool thickness/mm
1	BO 54 700 06			Diamond	Edge	150	25	35
2	BO 54 700 07			Diamond	Edge	150	25	35
3	BO 54 700 08			Diamond	Arris	130	20	35
4	BO 54 700 08			Diamond	Arris	130	20	35
5		BO 54 701 11	BO 54 702 21	Polishing	Arris	125	22	35
6		BO 54 701 11	BO 54 702 21	Polishing	Arris	125	22	35
7		BO 54 701 12	BO 54 702 22	Polishing	Edge	150	22 (A) / 68 (B)	40
8		BO 54 701 13	BO 54 702 35	Polishing (Cerium)	Edge	150	22 (A) / 68 (B)	30

Schiatti FPS 15 segm.

Pos.	Grinding	Polishing Type A	Polishing Type B	Wheel type	Application	Outside \varnothing /mm	Bore \varnothing /mm	Tool thickness/mm
1	BO 54 721 00			Diamond (Segmented)	Edge	150	25	35
2	BO 54 721 02			Diamond (Segmented)	Edge	150	25	35
3	BO 54 700 08			Diamond	Arris	130	20	35
4	BO 54 700 08			Diamond	Arris	130	20	35
5		BO 54 701 11	BO 54 702 21	Polishing	Arris	125	22	35
6		BO 54 701 11	BO 54 702 21	Polishing	Arris	125	22	35
7		BO 54 701 51	BO 54 702 81	Polishing (Segmented)	Edge	150	22 (A) / 68 (B)	40
8		BO 54 701 13	BO 54 702 35	Polishing (Cerium)	Edge	150	22 (A) / 68 (B)	30



Schiatti FPS 15 alternative

Pos.	Grinding	Polishing Type A	Polishing Type B	Wheel type	Application	Outside \varnothing /mm	Bore \varnothing /mm	Tool thickness/mm
1	BO 54 700 06			Diamond	Edge	150	25	35
2	BO 54 700 07			Diamond	Edge	150	25	35
3	BO 54 700 08			Diamond	Arris	130	20	35
4	BO 54 700 08			Diamond	Arris	130	20	35
5		BO 54 701 11	BO 54 702 21	Polishing	Arris	125	22	35
6		BO 54 701 11	BO 54 702 21	Polishing	Arris	125	22	35
7		BO 54 701 12	BO 54 702 22	Polishing	Edge	150	22 (A) / 68 (B)	40
8		BO 54 701 15	BO 54 702 23	Polishing	Edge	150	68	40

Schiatti FPS 15 alternative segm.

Pos.	Grinding	Polishing Type A	Polishing Type B	Wheel type	Application	Outside \varnothing /mm	Bore \varnothing /mm	Tool thickness/mm
1	BO 54 721 00			Diamond (Segmented)	Edge	150	25	35
2	BO 54 721 02			Diamond (Segmented)	Edge	150	25	35
3	BO 54 700 08			Diamond	Arris	130	20	35
4	BO 54 700 08			Diamond	Arris	130	20	35
5		BO 54 701 11	BO 54 702 21	Polishing	Arris	125	22	35
6		BO 54 701 11	BO 54 702 21	Polishing	Arris	125	22	35
7		BO 54 701 51	BO 54 702 81	Polishing (Segmented)	Edge	150	22 (A) / 68 (B)	40
8		BO 54 701 15	BO 54 702 23	Polishing	Edge	150	68	30



Schiatti FPS 15 S7

Pos.	Grinding	Polishing Type A	Polishing Type B	Wheel type	Application	Outside \varnothing /mm	Bore \varnothing /mm	Tool thickness/mm
1	BO 54 700 09			Diamond	Edge	150	25	35
2	BO 54 700 08			Diamond	Arris	130	20	35
3	BO 54 700 08			Diamond	Arris	130	20	35
4		BO 54 701 11	BO 54 702 18	Polishing	Arris	125	22	35
5		BO 54 701 11	BO 54 702 18	Polishing	Arris	125	22	35
6		BO 54 701 12	BO 54 702 19	Polishing	Edge	150	22 (A) / 68 (B)	40
7		BO 54 701 13	BO 54 702 23	Polishing (Cerium)	Edge	150	22 (A) / 68 (B)	30 (A) / 40 (B)

Schiatti FPS 15 S7 segm.

Pos.	Grinding	Polishing Type A	Polishing Type B	Wheel type	Application	Outside \varnothing /mm	Bore \varnothing /mm	Tool thickness/mm
1	BO 54 721 01			Diamond (Segmented)	Edge	150	25	35
2	BO 54 700 08			Diamond	Arris	130	20	35
3	BO 54 700 08			Diamond	Arris	130	20	35
4		BO 54 701 11	BO 54 702 18	Polishing	Arris	125	22	35
5		BO 54 701 11	BO 54 702 18	Polishing	Arris	125	22	35
6		BO 54 701 51	BO 54 702 81	Polishing (Segmented)	Edge	150	22 (A) / 68 (B)	40
7		BO 54 701 13	BO 54 702 23	Polishing (Cerium)	Edge	150	22 (A) / 68 (B)	30 (A) / 40 (B)



Schiatti FPS 15 S

Pos.	Grinding	Polishing Type A	Polishing Type B	Wheel type	Application	Outside \varnothing /mm	Bore \varnothing /mm	Tool thickness/mm
1	BO 54 700 06			Diamond	Edge	150	25	35
2	BO 54 700 07			Diamond	Edge	150	25	35
3	BO 54 700 08			Diamond	Arris	130	20	35
4	BO 54 700 08			Diamond	Arris	130	20	35
5		BO 54 701 11	BO 54 702 21	Polishing	Arris	125	22	35
6		BO 54 701 11	BO 54 702 21	Polishing	Arris	125	22	35
7		BO 54 701 14	BO 54 702 22	Polishing	Edge	150	68	40
8		BO 54 701 15	BO 54 702 23	Polishing	Edge	150	68	40

Schiatti FPS 15 S segm.

Pos.	Grinding	Polishing Type A	Polishing Type B	Wheel type	Application	Outside \varnothing /mm	Bore \varnothing /mm	Tool thickness/mm
1	BO 54 721 00			Diamond (Segmented)	Edge	150	25	35
2	BO 54 721 02			Diamond (Segmented)	Edge	150	25	35
3	BO 54 700 08			Diamond	Arris	130	20	35
4	BO 54 700 08			Diamond	Arris	130	20	35
5		BO 54 701 11	BO 54 702 21	Polishing	Arris	125	22	35
6		BO 54 701 11	BO 54 702 21	Polishing	Arris	125	22	35
7		BO 54 701 51	BO 54 702 81	Polishing (Segmented)	Edge	150	22 (A) / 68 (B)	40
8		BO 54 701 13	BO 54 702 35	Polishing (Cerium)	Edge	150	22 (A) / 68 (B)	30



Schiatti FPS 15 S9

Pos.	Grinding	Polishing Type A	Polishing Type B	Wheel type	Application	Outside \varnothing /mm	Bore \varnothing /mm	Tool thickness/mm
1	BO 54 700 06			Diamond	Edge	150	25	35
2	BO 54 700 07			Diamond	Edge	150	25	35
3	BO 54 700 08			Diamond	Arris	130	20	35
4	BO 54 700 08			Diamond	Arris	130	20	35
5		BO 54 701 11	BO 54 702 21	Polishing	Arris	125	22	35
6		BO 54 701 11	BO 54 702 21	Polishing	Arris	125	22	35
7		BO 54 701 12	BO 54 702 22	Polishing	Edge	150	22 (A) / 68 (B)	40
8		BO 54 701 21	BO 54 702 23	Polishing	Edge	150	22 (A) / 68 (B)	40
9		BO 54 701 13	BO 54 702 35	Polishing (Cerium)	Edge	150	22 (A) / 68 (B)	30

Schiatti FPS 15 S9 segm.

Pos.	Grinding	Polishing Type A	Polishing Type B	Wheel type	Application	Outside \varnothing /mm	Bore \varnothing /mm	Tool thickness/mm
1	BO 54 721 00			Diamond (Segmented)	Edge	150	25	35
2	BO 54 721 02			Diamond (Segmented)	Edge	150	25	35
3	BO 54 700 08			Diamond	Arris	130	20	35
4	BO 54 700 08			Diamond	Arris	130	20	35
5		BO 54 701 11	BO 54 702 21	Polishing	Arris	125	22	35
6		BO 54 701 11	BO 54 702 21	Polishing	Arris	125	22	35
7		BO 54 701 51	BO 54 702 81	Polishing (Segmented)	Edge	150	22 (A) / 68 (B)	40
8		BO 54 701 21	BO 54 702 23	Polishing	Edge	150	22 (A) / 68 (B)	40
9		BO 54 701 13	BO 54 702 35	Polishing (Cerium)	Edge	150	22 (A) / 68 (B)	30



Schiatti FPS 15 RS

Pos.	Grinding	Polishing Type A	Polishing Type B	Wheel type	Application	Outside \varnothing /mm	Bore \varnothing /mm	Tool thickness/mm
1	BO 54 700 06			Diamond	Edge	150	25	35
2	BO 54 700 07			Diamond	Edge	150	25	35
3	BO 54 700 08			Diamond	Arris	130	20	35
4	BO 54 700 08			Diamond	Arris	130	20	35
5		BO 54 701 11	BO 54 702 21	Polishing	Arris	125	22	35
6		BO 54 701 11	BO 54 702 21	Polishing	Arris	125	22	35
7		BO 54 701 14	BO 54 702 22	Polishing	Edge	150	68	40
8		BO 54 701 15	BO 54 702 23	Polishing	Edge	150	68	40
9		BO 54 701 13	BO 54 702 35	Polishing (Cerium)	Edge	150	22 (A) / 68 (B)	30

Schiatti FPS 15 RS segm.

Pos.	Grinding	Polishing Type A	Polishing Type B	Wheel type	Application	Outside \varnothing /mm	Bore \varnothing /mm	Tool thickness/mm
1	BO 54 721 00			Diamond (Segmented)	Edge	150	25	35
2	BO 54 721 02			Diamond (Segmented)	Edge	150	25	35
3	BO 54 700 08			Diamond	Arris	130	20	35
4	BO 54 700 08			Diamond	Arris	130	20	35
5		BO 54 701 11	BO 54 702 21	Polishing	Arris	125	22	35
6		BO 54 701 11	BO 54 702 21	Polishing	Arris	125	22	35
7		BO 54 701 51	BO 54 702 81	Polishing (Segmented)	Edge	150	22 (A) / 68 (B)	40
8		BO 54 701 15	BO 54 702 23	Polishing	Edge	150	68	40
9		BO 54 701 13	BO 54 702 35	Polishing (Cerium)	Edge	150	22 (A) / 68 (B)	30



①



②



③



④

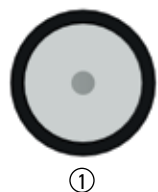
Glass travel direction

Zafferani FLAT 4 FPE

Pos.	Grinding	Polishing Type A	Polishing Type B	Wheel type	Application	Outside \varnothing /mm	Bore \varnothing /mm	Tool thickness/mm
1	BO 54 700 01			Diamond	Edge	150	50	35
2		BO 54 701 02	BO 54 702 26	Polishing	Edge	150	50	40
3		BO 54 701 00	BO 54 702 27	Grinding-Polishing	Arris	100	50	30
4		BO 54 701 00	BO 54 702 27	Grinding-Polishing	Arris	100	50	30

Zafferani FLAT 4 FPE segm.

Pos.	Grinding	Polishing Type A	Polishing Type B	Wheel type	Application	Outside \varnothing /mm	Bore \varnothing /mm	Tool thickness/mm
1	BO 54 731 00			Diamond (Segmented)	Edge	150	50	35
2		BO 54 701 02	BO 54 702 26	Polishing	Edge	150	50	40
3		BO 54 701 00	BO 54 702 27	Grinding-Polishing	Arris	100	50	30
4		BO 54 701 00	BO 54 702 27	Grinding-Polishing	Arris	100	50	30



Glass travel direction

Zafferani FLAT 5 FPE

Pos.	Grinding	Polishing Type A	Polishing Type B	Wheel type	Application	Outside \varnothing /mm	Bore \varnothing /mm	Tool thickness/mm
1	BO 54 700 01			Diamond	Edge	150	50	35
2		BO 54 701 02	BO 54 702 28	Polishing	Edge	150	50	40
3		BO 54 701 23	BO 54 702 30	Polishing (Cerium)	Edge	150	50	40 (A) / 30 (B)
alternative		BO 54 701 01	BO 54 702 29	Polishing	Edge	150	50	40
4		BO 54 701 00	BO 54 702 27	Grinding-Polishing	Arris	100	50	30
5		BO 54 701 00	BO 54 702 27	Grinding-Polishing	Arris	100	50	30

Zafferani FLAT 5 FPE segm.

Pos.	Grinding	Polishing Type A	Polishing Type B	Wheel type	Application	Outside \varnothing /mm	Bore \varnothing /mm	Tool thickness/mm
1	BO 54 731 00			Diamond (Segmented)	Edge	150	50	35
2		BO 54 701 02	BO 54 702 28	Polishing	Edge	150	50	40
3		BO 54 701 23	BO 54 702 30	Polishing (Cerium)	Edge	150	50	40 (A) / 30 (B)
4		BO 54 701 00	BO 54 702 27	Grinding-Polishing	Arris	100	50	30
5		BO 54 701 00	BO 54 702 27	Grinding-Polishing	Arris	100	50	30

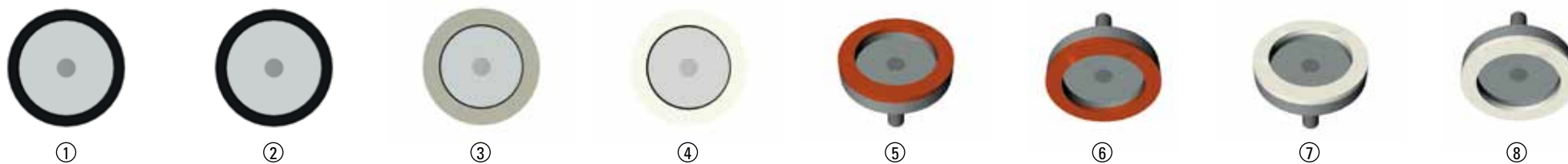


Zafferani FLAT 6 BPE

Pos.	Grinding	Polishing Type A	Polishing Type B	Wheel type	Application	Outside \varnothing /mm	Bore \varnothing /mm	Tool thickness/mm
1	BO 54 700 00			Diamond	Edge	150	50	35
2		BO 54 701 02	BO 54 702 28	Polishing	Edge	150	50	40
3		BO 54 701 23	BO 54 702 30	Polishing (Cerium)	Edge	150	50	40 (A) / 30 (B)
4				Diamond	Mitre	130	50	30
5		BO 54 701 00	BO 54 702 27	Grinding-Polishing	Arris	100	50	30
6		BO 54 701 00	BO 54 702 27	Grinding-Polishing	Arris	100	50	30

Zafferani FLAT 6 BPE segm.

Pos.	Grinding	Polishing Type A	Polishing Type B	Wheel type	Application	Outside \varnothing /mm	Bore \varnothing /mm	Tool thickness/mm
1	BO 54 731 01			Diamond (Segmented)	Edge	150	50	35
2		BO 54 701 02	BO 54 702 28	Polishing	Edge	150	50	40
3		BO 54 701 23	BO 54 702 30	Polishing (Cerium)	Edge	150	50	40 (A) / 30 (B)
4				Diamond	Mitre	130	50	30
5		BO 54 701 00	BO 54 702 27	Grinding-Polishing	Arris	100	50	30
6		BO 54 701 00	BO 54 702 27	Grinding-Polishing	Arris	100	50	30

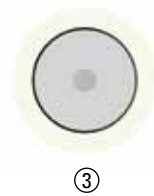


Zafferani FLAT 8 FPE

Pos.	Grinding	Polishing Type A	Polishing Type B	Wheel type	Application	Outside \varnothing /mm	Bore \varnothing /mm	Tool thickness/mm
1	BO 54 700 00			Diamond	Edge	150	50	35
2	BO 54 700 17			Diamond	Edge	150	50	35
3		BO 54 701 03	BO 54 702 26	Polishing	Edge	150	50	40
4		BO 54 701 23	BO 54 702 30	Polishing (Cerium)	Edge	150	50	40 (A) / 30 (B)
5		BO 54 701 25	BO 54 702 27	Grinding-Polishing	Arris	100	50	30
6		BO 54 701 25	BO 54 702 27	Grinding-Polishing	Arris	100	50	30
7		BO 54 701 04	BO 54 702 32	Polishing (Cerium)	Arris	100	50	30
8		BO 54 701 04	BO 54 702 32	Polishing (Cerium)	Arris	100	50	30

Zafferani FLAT 8 FPE segm.

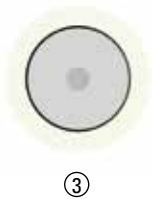
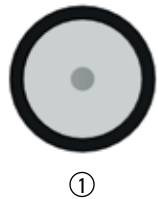
Pos.	Grinding	Polishing Type A	Polishing Type B	Wheel type	Application	Outside \varnothing /mm	Bore \varnothing /mm	Tool thickness/mm
1	BO 54 731 01			Diamond (Segmented)	Edge	150	50	35
2	BO 54 731 04			Diamond (Segmented)	Edge	150	50	35
3		BO 54 701 50	BO 54 702 31	Polishing (Segmented)	Edge	150	50	40
4		BO 54 701 23	BO 54 702 30	Polishing (Cerium)	Edge	150	50	40 (A) / 30 (B)
5		BO 54 701 25	BO 54 702 27	Grinding-Polishing	Arris	100	50	30
6		BO 54 701 25	BO 54 702 27	Grinding-Polishing	Arris	100	50	30
7		BO 54 701 04	BO 54 702 32	Polishing (Cerium)	Arris	100	50	30
8		BO 54 701 04	BO 54 702 32	Polishing (Cerium)	Arris	100	50	30



Glass travel direction

Zafferani FLAT 5 BS-60°

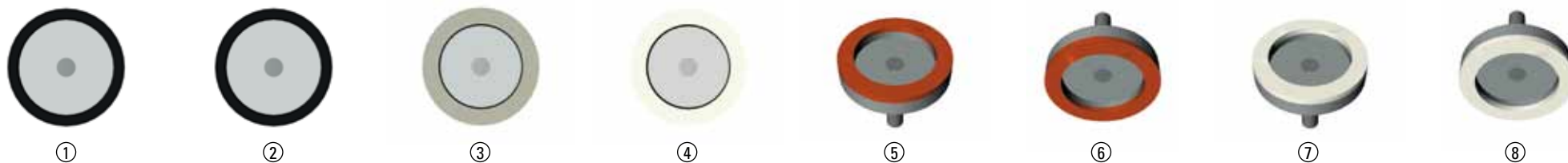
Pos.	Grinding	Polishing Type A	Polishing Type B	Wheel type	Application	Outside ø/mm	Bore ø/mm	Tool thickness/mm
1	BO 54 731 00			Diamond (Segmented)	Edge / Mitre	150	50	35
2		BO 54 701 02	BO 54 702 28	Polishing	Edge / Mitre	150	50	40
3		BO 54 701 23	BO 54 702 29	Polishing (Cerium) (A) / Polishing (B)	Edge / Mitre	150	50	40
4		BO 54 701 00	BO 54 702 27	Grinding-Polishing	Arris	100	50	30
5		BO 54 701 00	BO 54 702 27	Grinding-Polishing	Arris	100	50	30



Glass travel direction

Zafferani FLAT 7 BS-60°

Pos.	Grinding	Polishing Type A	Polishing Type B	Wheel type	Application	Outside ø/mm	Bore ø/mm	Tool thickness/mm
1	BO 54 731 00			Diamond (Segmented)	Edge / Mitre	150	50	35
2		BO 54 701 03	BO 54 702 29	Polishing	Edge / Mitre	150	50	40
3		BO 54 701 23	BO 54 702 30	Polishing (Cerium)	Edge / Mitre	150	50	40 (A) / 30 (B)
4		BO 54 701 05	BO 54 702 27	Grinding-Polishing	Arris	100	50	30
5		BO 54 701 05	BO 54 702 27	Grinding-Polishing	Arris	100	50	30
6		BO 54 701 04	BO 54 702 32	Polishing (Cerium)	Arris	100	50	30
7		BO 54 701 04	BO 54 702 32	Polishing (Cerium)	Arris	100	50	30

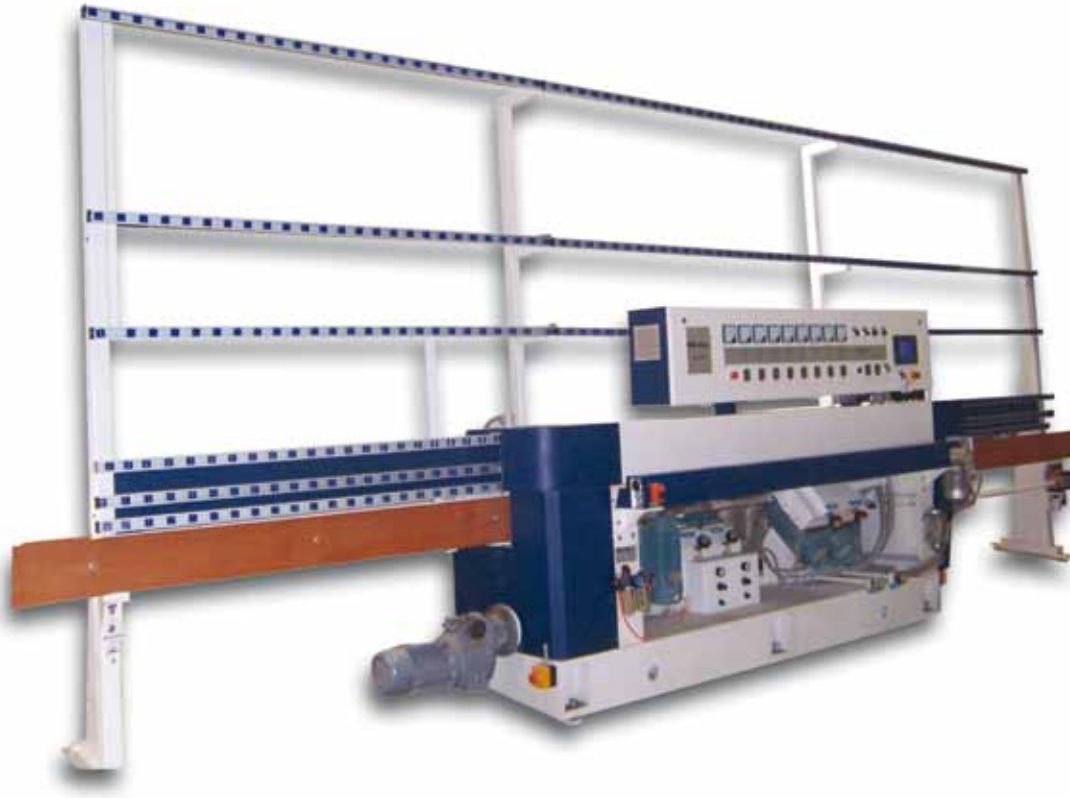


Zafferani FLAT 8 BS-60°

Pos.	Grinding	Polishing Type A	Polishing Type B	Wheel type	Application	Outside ø/mm	Bore ø/mm	Tool thickness/mm
1	BO 54 700 00			Diamond	Edge / Mitre	150	50	35
2	BO 54 700 17			Diamond	Edge / Mitre	150	50	35
3		BO 54 701 03	BO 54 702 29	Polishing	Edge / Mitre	150	50	40
4		BO 54 701 05	BO 54 702 27	Grinding-Polishing	Arris	100	50	30
5		BO 54 701 05	BO 54 702 27	Grinding-Polishing	Arris	100	50	30
6		BO 54 701 04	BO 54 702 32	Polishing (Cerium)	Arris	100	50	30
7		BO 54 701 04	BO 54 702 32	Polishing (Cerium)	Arris	100	50	30

Zafferani FLAT 8 BS-60° segm.

Pos.	Grinding	Polishing Type A	Polishing Type B	Wheel type	Application	Outside ø/mm	Bore ø/mm	Tool thickness/mm
1	BO 54 731 01			Diamond (Segmented)	Edge / Mitre	150	50	35
2	BO 54 731 04			Diamond (Segmented)	Edge / Mitre	150	50	35
3		BO 54 701 03	BO 54 702 29	Polishing	Edge / Mitre	150	50	40
4		BO 54 701 05	BO 54 702 27	Grinding-Polishing	Arris	100	50	30
5		BO 54 701 05	BO 54 702 27	Grinding-Polishing	Arris	100	50	30
6		BO 54 701 04	BO 54 702 32	Polishing (Cerium)	Arris	100	50	30
7		BO 54 701 04	BO 54 702 32	Polishing (Cerium)	Arris	100	50	30



Vetrocraft - The Bohle Value Line

The new Vetrocraft straight line edgers offer an unbeatable price performance ratio and are designed to efficiently grind, arris and polish straight edges. The machines are available with 4, 6, 8 or 9 spindles and can process glass panes weighing up to 300 kg and measuring from 80 x 80 mm to 2000 x 3000 mm in thickness ranging from 3 mm to 28 mm. The working speed is continuously adjustable from 0.8 to 3 meters per minute.

Vetrocraft – High edge quality, low investment costs.

www.bohle-group.com

High edge quality, low investment costs.

Austria

Bohle GmbH
Lemböckgasse 63/2/1
A-1230 Wien
T +43 1 804 4853-0
F +43 1 804 4853-33
info@bohle.at

United Kingdom and Ireland

Bohle Ltd.
Fifth Avenue
Tameside Park · Dukinfield
Cheshire · SK16 4PP
T +44 161 3421100
F +44 161 3440111
info@bohle.ltd.uk

France

Bohle AG
Département français
Dieselstraße 10
D- 42781 Haan
T +49 2129 5568-222
F +49 2129 5568-281
france@bohle.de

Hungary

Bohle GmbH - Forgalmazás HU
Lemböckgasse 63/2/1
A-1230 Wien
T +43 1 8044853-19
F +43 1 8044853-44
hungary@bohle.at

Italy

Bohle Italia s.r.l.
Via Cavallotti 28
I-20081 Abbiategrasso
T +39 02 9496-7790
F +39 02 9460-9011
info@bohle.it

Netherlands

Bohle Benelux B.V.
Nieuweweg Noord 314 B - 20
NL-3905 LX Veenendaal
T +31 318 553151
F +31 318 519859
info@bohle.nl

Spain

Bohle Ibérica
Mare de Deu de Bellvitge, 312
E- 08907 L'Hospitalet
Barcelona
T +34 90288-9119
F +34 90288-9118
info@bohle.es

South Africa

Bohle Glass Equipment (Pty) Ltd.
Unit 3, Graphite Industrial Park
Fabriek Street,
Strijdom Park 2125, Gauteng
T +27 11 792-6432/30
F +27 11 793-5634
info@bohle.co.za

Sweden

Bohle Scandinavia AB
Pyramidbacken 3
SE-14175 Kungens Kurva
T +46 8 44957-50
F +46 8 44957-59
info@bohle.se

USA

Bohle America, Inc.
10924 Granite Street
Suite 200, Charlotte, NC 28273
T +1 704 887 3457
F +1 704 887 3456
info@bohle-america.com

Estonia

Bohle Baltic OÜ
Punane 42 - 101
EE-13619 Tallinn
T +372 6112-826
F +372 6112-790
info@bohle.ee

Russia

Bohle - Moskau
Leninsky Rayon
Business Center Rumjanzevo
Bldg. 1, Block A, Office 721 A,
RU-142784 Moscow
T +7 499 94094-04
F +7 499 94093-93
info@bohle.ru

Russia

Bohle - St. Petersburg
Ul. Bumazhnaya 9, korp. 1/A,
Office 422
RU-198020 St. Petersburg
T +7 812 4452792
F +7 812 4452793
info@bohle.spu.ru

Germany

Bohle AG - Head Office
Dieselstraße 10
D- 42781 Haan
T +49 2129 5568-0
F +49 2129 5568-281
info@bohle.de