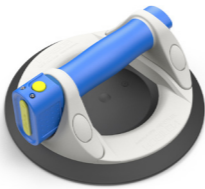


More security

When lifting, carrying and holding non-permeable, flat panes, panels or components weighing up to 120 kg, the smart vacuum lifter enables convenient suction at the touch of a button. Manual pumping is no longer necessary, saving effort, energy and time. If the vacuum drops, the battery-powered pump automatically reapplies suction. In this way, it not only increases ease of use, but above all safety.



Veribor® Plastic battery-powered suction lifter BO 601GA

TECHNICAL DETAILS

Load capacity: 120 kg
Lifting direction : parallel
Surface geometry: plan
Suction pad: ø 213 mm

SCOPE OF DELIVERY

Plastic pump suction lifter
Battery-powered pump + manual pump
USB-C charging cable
Transport case



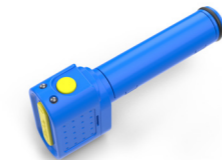
Veribor® Aluminium battery-powered suction lifter BO 601A

TECHNICAL DETAILS

Load capacity: 120 kg
Lifting direction : parallel
Surface geometry: plan
Suction pad: ø 213 mm

SCOPE OF DELIVERY

Aluminium pump suction lifter
Battery-powered pump + manual pump
USB-C charging cable
Transport case



Veribor® Battery-powered suction pump BO 601.0A

TECHNICAL DETAILS

Charging time: approx. 3h
Pump cycles: approx. 600 per charge
All standard USB chargers can be used

SCOPE OF DELIVERY

Battery-powered pump
USB-C charging cable
Sleeve for transport case
Adapter for BO 601



The nuts and bolts from A to Z.

The Veribor® suction lifter with battery-powered pump is the first choice when it comes to lifting, holding and carrying larger components. With a load capacity of up to 120 kg, it is ideal for a wide variety of objects:

- ✓ Flat surfaces
- ✓ Coated wooden panels
- ✓ Tiles
- ✓ Glass
- ✓ Plastic sheets
- ✓ Sheet metal

Germany

Bohle AG
Dieselstr. 10
42781 Haan

T +49 2129 5568-851

vacuumtechnology@bohle.de



VERIBOR
MADE IN GERMANY

www.bohle.com

KA 188ENEX_02.2024_2024-0134_EN

Veribor® battery-powered suction lifter
Simple, safe suction at the touch of a button

Staying power

One battery charge delivers 600 pump applications. With a normal workload, the suction lifter can therefore be relied upon for a long time on just one battery charge. The battery is recharged in around three hours. Work can continue without delay during the charging process thanks to the manual pump supplied, the user can quickly and easily switch between battery and hand pump modes. Another special advantage that the Veribor® battery operated pump lifter offers is that it can be retro-fitted to upgrade existing Veribor® manual lifters.



Retrofit your suction lifter

Simply retrofit your manual pump suction lifter with the Veribor® battery-powered pump and automatically make your work safer. Available separately, the battery-powered pump is compatible with the B0601 and B0601G suction lifters and is quick and easy to use.

Step 1

Pull out the manual pump plunger



Step 2

Insert the battery pump into the suction lifter



Step 3

Push the battery pump in as far as it will go.



Simple operation

The battery-powered pump automatically reapplies suction when the vacuum lifter is released from the disc or plate. All you have to do is hold the device against the next object and it immediately builds up the required vacuum again. Thanks to this ingenious function, the suction lifter can be operated with just one hand, speeding up work processes - for example, when several panels need to be moved from A to B quickly.

“Compared with conventional pump suction lifters, the new Veribor® battery-powered suction lifter sets new standards in terms of comfort and safety,” explains Ennio Dünwald, the responsible Bohle Product Manager. “The device noticeably relieves the user and demonstrably contributes to increased productivity, as it can be operated with just one hand.”

- 120 kg load capacity
- Quick vacuum build-up at the touch of a button
- Increased safety thanks to automatic pumping
- 2-fold safety mechanism when switching off
- Can be retrofitted to existing Veribor® pump suction lifters