

For detailed information, please visit www.bohle-group.com!

Bystronic
glass

Additional articles for Bystronic cutting machines



BO 436.BYA
Ø 29 mm · Height 35 mm

BO 438.160B



Bearing unit for 436.BYA · supplied complete with axle 438.060B and ball bearing · Ø 16 mm total length 31.5 mm

BO 438.060B



Axle · hardened · for 436.BY and other articles · Ø 6/Ø 8 mm · total length 31.5 mm

INTERMAC

Additional articles for Intermac cutting machines



BO 436.G
Taper reception for 432.0 · for Intermac-Genius · Ø 29.5 mm · height 30.0 mm



BO 436.G2
Taper reception for wheel type 416 · for Intermac-Genius · Ø 29.5 mm · height 30.0 mm



BO 436.G4
Taper reception for 08A160 · for Intermac-Genius · Ø 29.5 mm · height 30.0 mm

Silberschnitt® Metal wheel holders

In order to optimise the cutting applications, Bohle offers an addition to the standard type 416 plastic wheel holders. With the metal wheel holder 439.16 and the plastic rings available in different colours to identify the cutting angle, the cutting properties can be improved significantly. Especially for applications involving shape cuts or open cuts, it is recommended to use a wheel holder of the 439.16 series.

BO 439.16 / BO 439.16V



BO 439.16
Bore hole Ø 1.4 mm · Slot 1.1 mm · for Carbide Wheels 12, 03 · Suitable carbide axle BO 496.140F · Version non-tempered

BO 439.16V
Bore hole Ø 1.4 mm · Slot 1.1 mm · for Carbide Wheels 12, 03 · Suitable carbide axle BO 496.140F · Version tempered

In order to meet our customers' demands, the cutting wheels are available with engraved cutting angle on request. The following wheels are available engraved with the standard cutting angles:

- Type 02 Ø 5.0 x 1.00 x Ø 1.30 mm
- Type 12 Ø 4.1 x 1.08 x Ø 1.42 mm
- Type 03 Ø 5.6 x 1.08 x Ø 1.42 mm

Automatic Cutting Technology



NEW



Cutting wheels with inscription

In order to help you make the right choice from the large number of possible combinations, we have summarised the glass cutting wheels for the most frequent applications in the table below and they are readily available from stock.

For detailed information, please visit www.bohle-group.com!



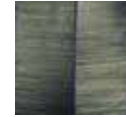
Filberschnitt
ACTIVE

For standard cutting applications for 3 - 19 mm glass.
For automatic cutting of shapes as well as laminated glass. For open cuts in glass thicknesses of 2 to 6 mm in the automotive field.



Filberschnitt
BASIC

For automatic cutting of 2 - 8 mm float glass.



Filberschnitt
CONTACT PLUS

For thin glass where high edge quality is required.
For display glass as well as LCD, TFT and PDP.
For cutting narrow edges with 3 - 10 mm glass, online.



Type	06	66	05	12	02	02...L	03	07	63	64	23	33	
Outer diameter of wheels in mm (*)	2.5 (0.0984")	3 (0.1181")	3 (0.1181")	4.1 (0.1614")	5 (0.1969")	5 (0.1969")	5.6 (0.2205")	6 (0.2362")	6 (0.2362")		5.6 (0.22")	6.2 (0.2441")	
Wheel thickness in mm (*)	0.65 (0.0256")	0.65 (0.0256")	1 (0.0394")	1.08 (0.0425")	1 (0.0394")	1 (0.0394")	1.08 (0.0425")	1.14 (0.0449")	3 (0.1181")		1.08 (0.0425")	1.08 (0.0425")	
Drill hole in mm (*)	0.8 (0.0315")	0.8 (0.0315")	1.3 (0.0512")	1.42 (0.0559")	1.3 (0.0512")	1.3 (0.0512")	1.42 (0.0559")	1.55 (0.0610")	1.6 (0.0630")		1.62 (0.063")	1.42 (0.0567")	
Packaging unit	10 / 100 pcs.	10 / 100 pcs.	10 / 100 pcs.	10 / 100 pcs.	10 / 100 pcs.	Thickness tolerance +0.01 mm (+0.0004"), 10 / 100 pcs.	10 / 100 pcs.	10 / 100 pcs.	10 pcs.		10 / 100 pcs.	100 pcs.	
Order no. / cutting angle	06B000 06C000	66A000 66B000 66C000	05A000 05B000 05C000	12A000 12B000 12C000	02A000 02B000 02C000	02A000L 02B000L 02C000L	03A000 03B000 03C000	07A000 07B000 07C000	63A000 64A000	23B000 23B000H	23A000 23A000H	33A000 33A000H	
77°													
90°													
116°						02B116 02C116							
118°						02C118		02C118L					
120°						12B120 12C120	02B120 02C120		03B120 03C120		07B120		
127°						12B127 12C127	02A127 02B127 02C127	02B127L	03B127 03C127		07B127	23B127 23B127H	
135°	06B135		05A135 05B135	12A135	12B135	02A135 02B135	02A135L 02B135L	03A135 03B135	07A135 07B135		23A135 23A135H	33A135	
140°	06B140		05A140 05B140	12A140	12B140	02A140 02B140		03A140 03B140	07A140 07B140				
145°	06B145		05A145 05B145	12A145	12B145	02A145 02B145	02A145L	03A145 03B145	07A145 07B145	63A145	23A145 23A145H	33A145	
148°				12A148									
150°	06B150		05A150 05B150	12A150	12B150	02A150 02B150	02A150L	03A150 03B150	07A150 07B150	63A150 64A150			
152°				12A152				03A152					
153°				12A153				03A153					
154°				12A154				03A154					
155°				12A155	12B155	02A155 02B155	02A155L	03A155 03B155	07A155 07B155	63A155 63A155		33A155	
156°								03A156					
158°				12A158				03A158					
159°				12A159									
160°				12A160	12B160	02A160	02A160L	03A160		63A160			
165°				12A165	12B165	02A165	02A165L	03A165		63A165			
For wheel holder	432.6	432.6	432.3		422.0, 432.0/432.1, 422.0A, 432.4	432.3/414.000, type 416, type 419, 432.3	439.1, 439.2	422.0, 432.0/432.1, 422.0A, 432.4	417.000, 418.000	422.1	422.2	432.0, 432.1, 432.4, 422.0, 422.1, 439.16, 439.122	
Axles	496.080	496.080	496.130	Depending on type of wheel holder	Depending on type of wheel holder		496.439/496.130	Depending on type of wheel holder		496.160	496.300	496.160	496.138F, 496.139F, 496.422, 496.140F